

West Virginia Medical Cannabis: Patient and Physician Interest Survey Results and Other Data

Loretta Haddy, PhD, MS
State Epidemiologist
December 14, 2017

WV Medical Cannabis Advisory Board



Presentation Summary

- **Objectives for Data Set Analyses**
- **Patient Interest Survey**
- **Provider Interest Survey**
- **Other Available Data Systems**
- **Methods and Result Narrative Statements for Each Data Set**
- **Graphics for Data Summaries**
- **County and Public Health District Maps**
- **Zip Code Maps: Patient Survey, Cancer Data, Medicaid and Medicare Data**

Data Objectives for Patient Survey

Method:

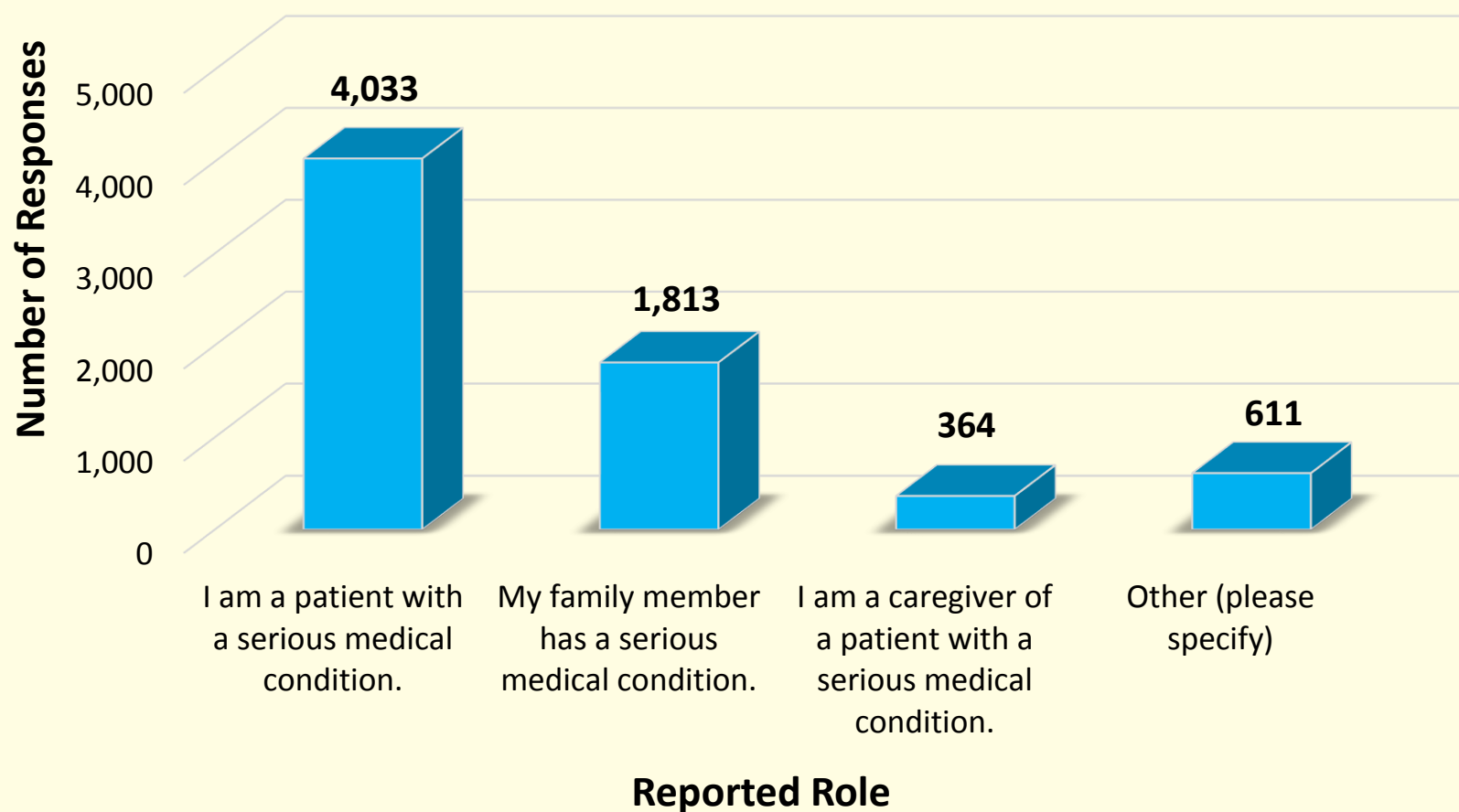
Survey online October 14, 2017 - November 20, 2017

Results:

- **6,174 responses (62 by mail and 6,112 online)**
- **Patient provided zip code and interest in medical cannabis**
- **6,003 surveys analyzed, 171 were out of state zip codes so not included in analysis**
- **Patients diagnosed with serious medical condition(s)**
- **Mapped serious medical conditions by patient zip code**
- **Most respondents indicated they were a patient or a family member was a patient**
- **Patients indicated how far they would travel to a dispensary**
- **Most frequent “other condition” response was related to anxiety disorders**

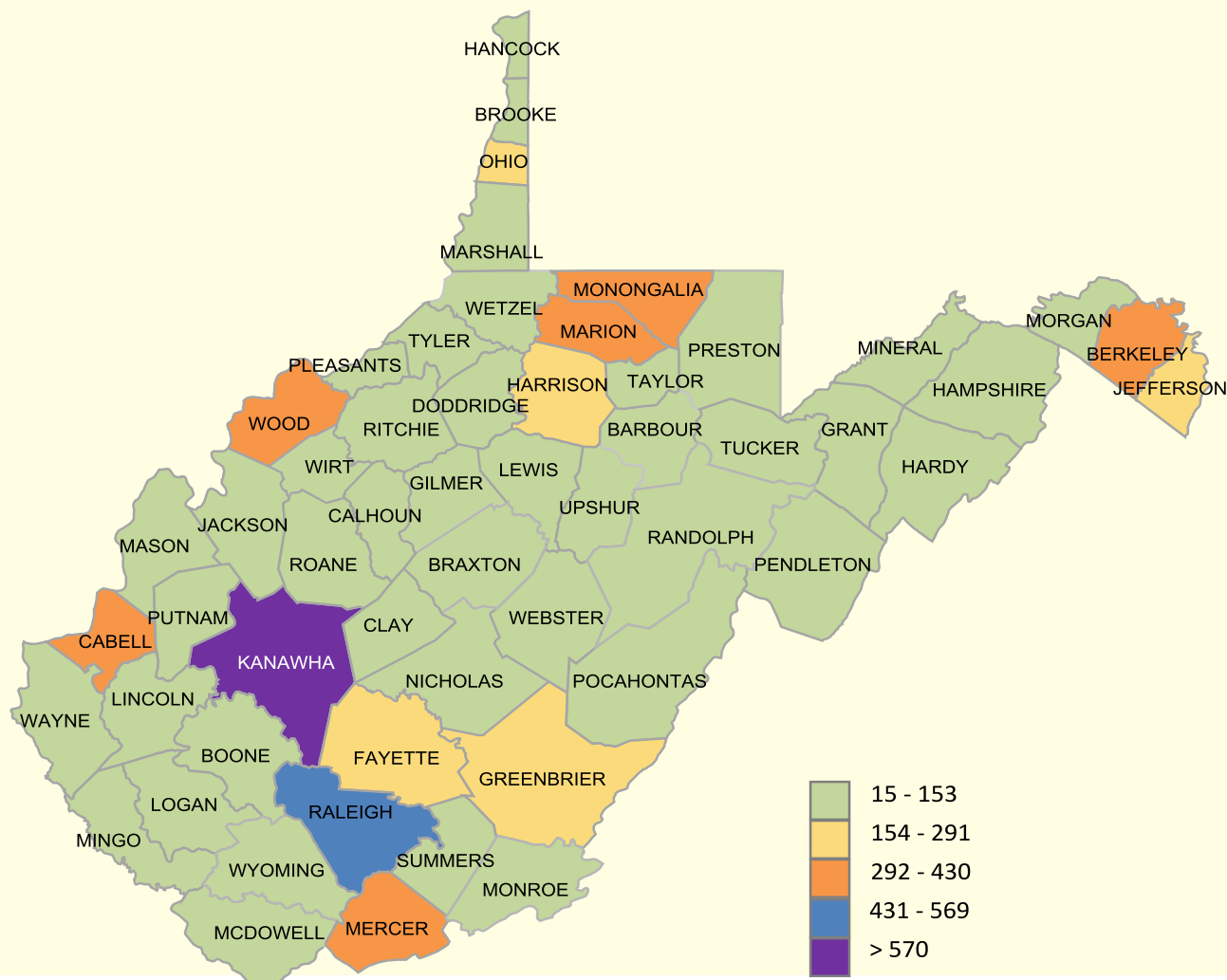
Results - Patient Survey

Reported Interest in Use of Medical Cannabis, West Virginia, 2017

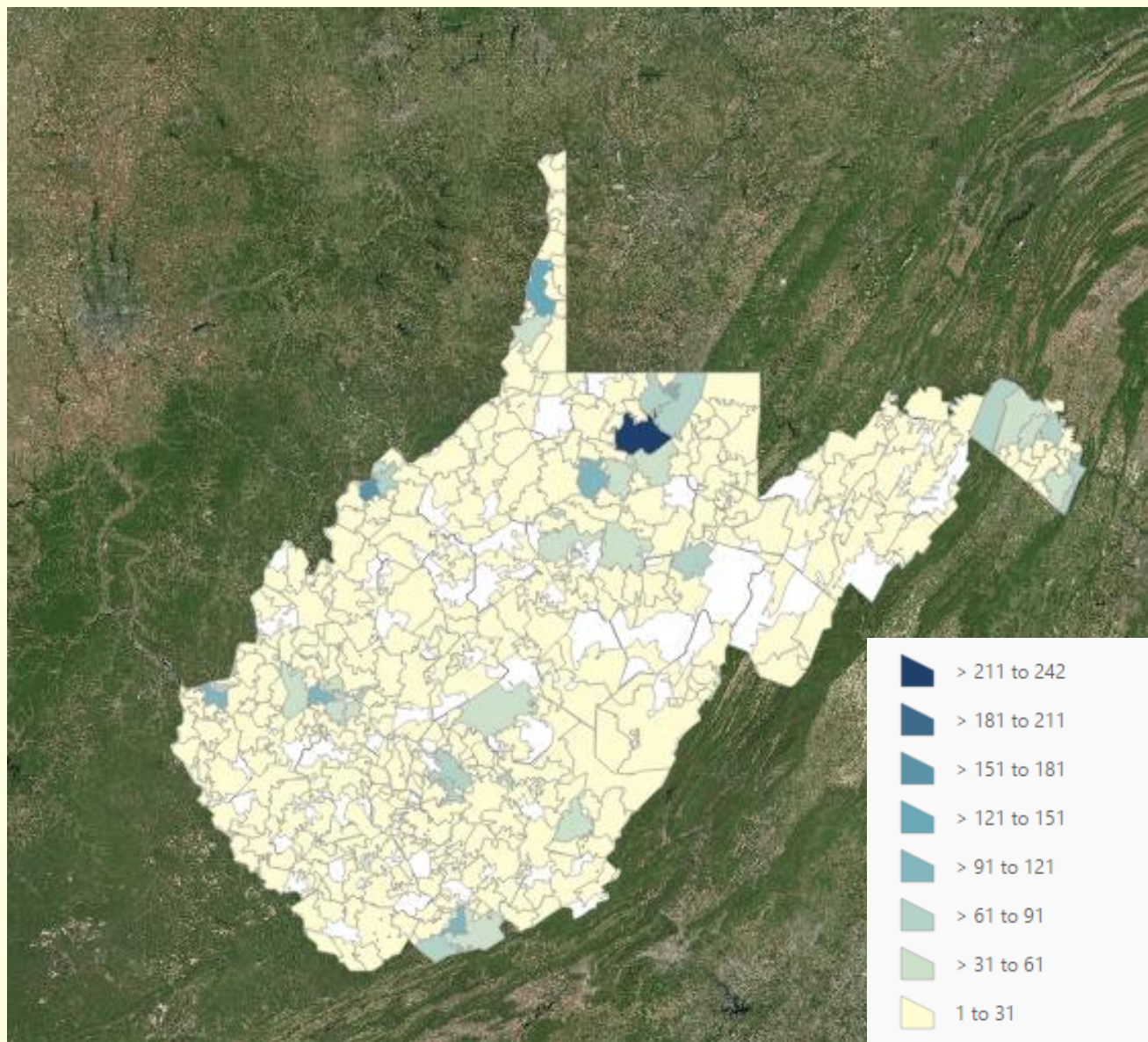


Results - Patient Survey (cont'd)

Counties from which Patient Respondents Reported, West Virginia, 2017

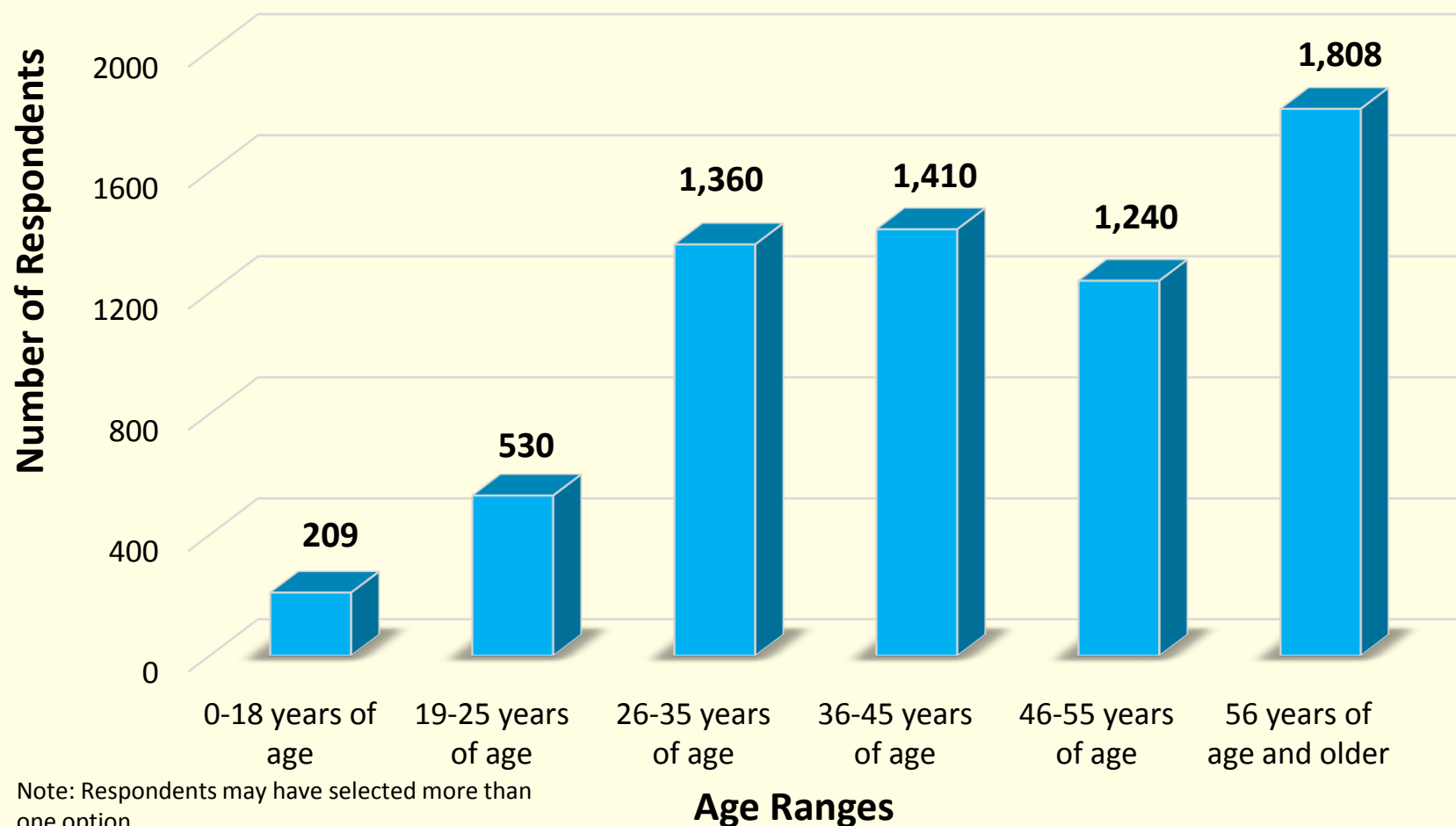


Patient Survey Respondents by Zip Code, 2017



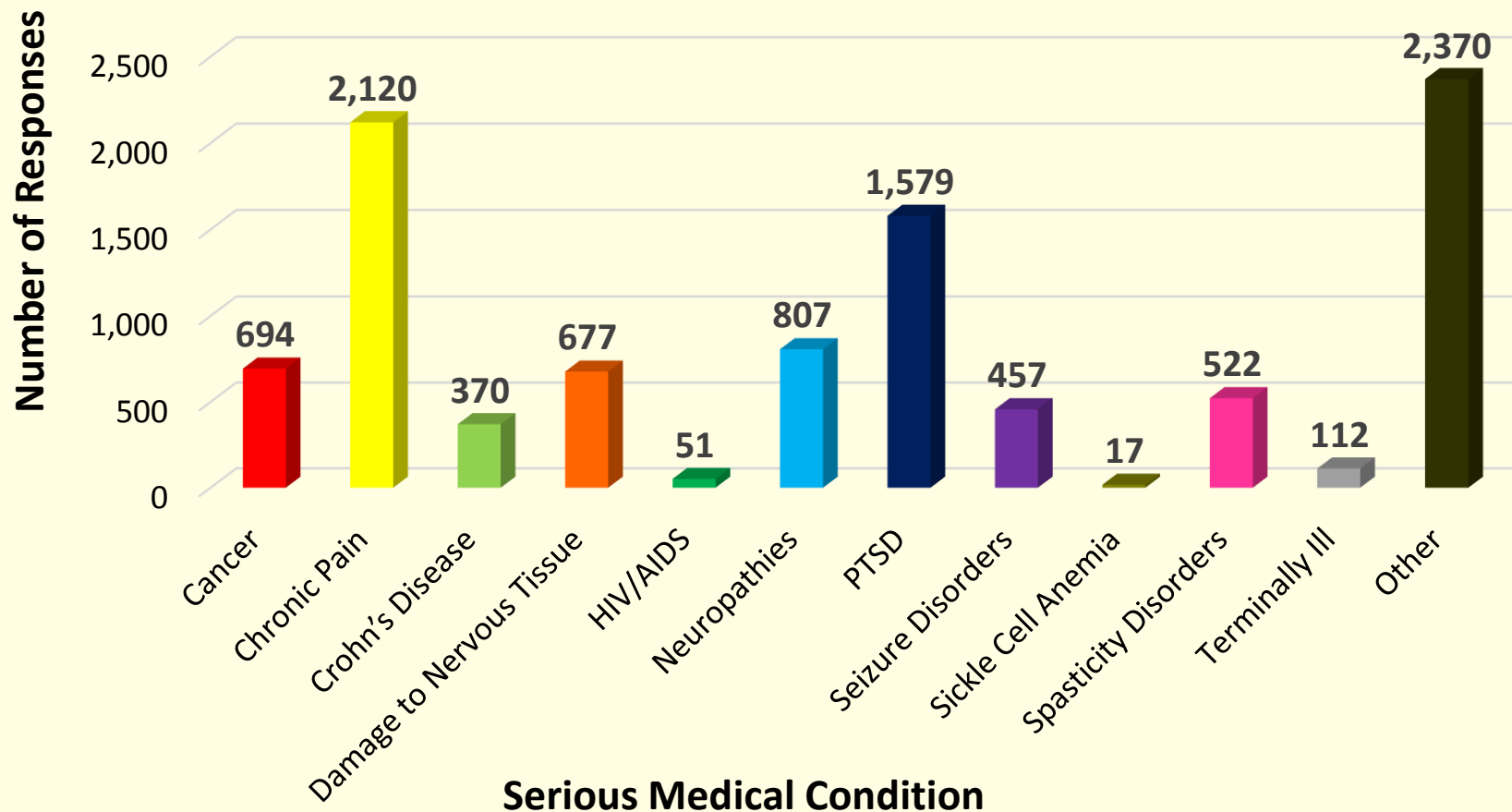
Results - Patient Survey (cont'd)

Age Ranges of Patient Respondents, West Virginia, 2017



Results - Patient Survey (cont'd)

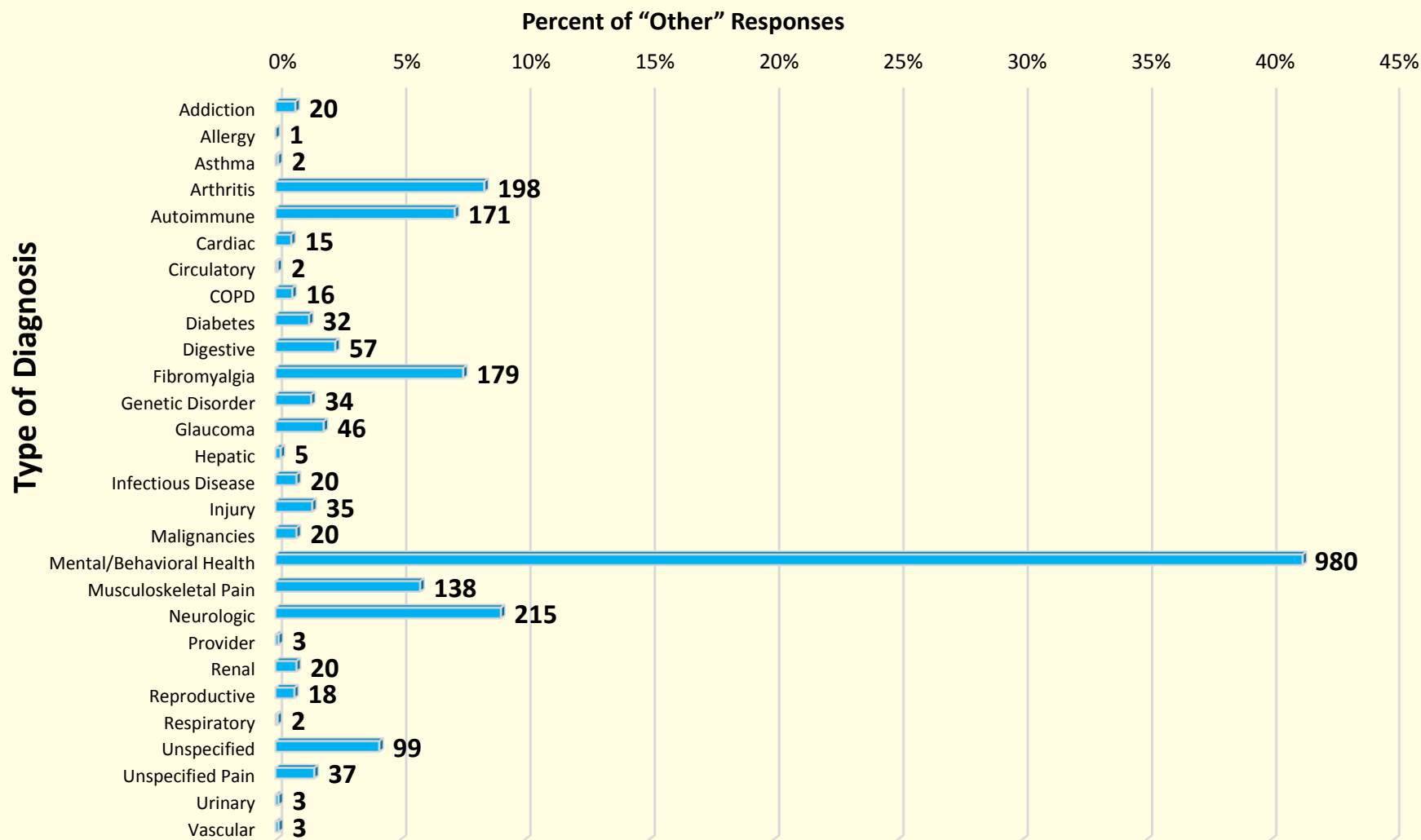
Diagnoses Reported by Patient Respondents, West Virginia, 2017



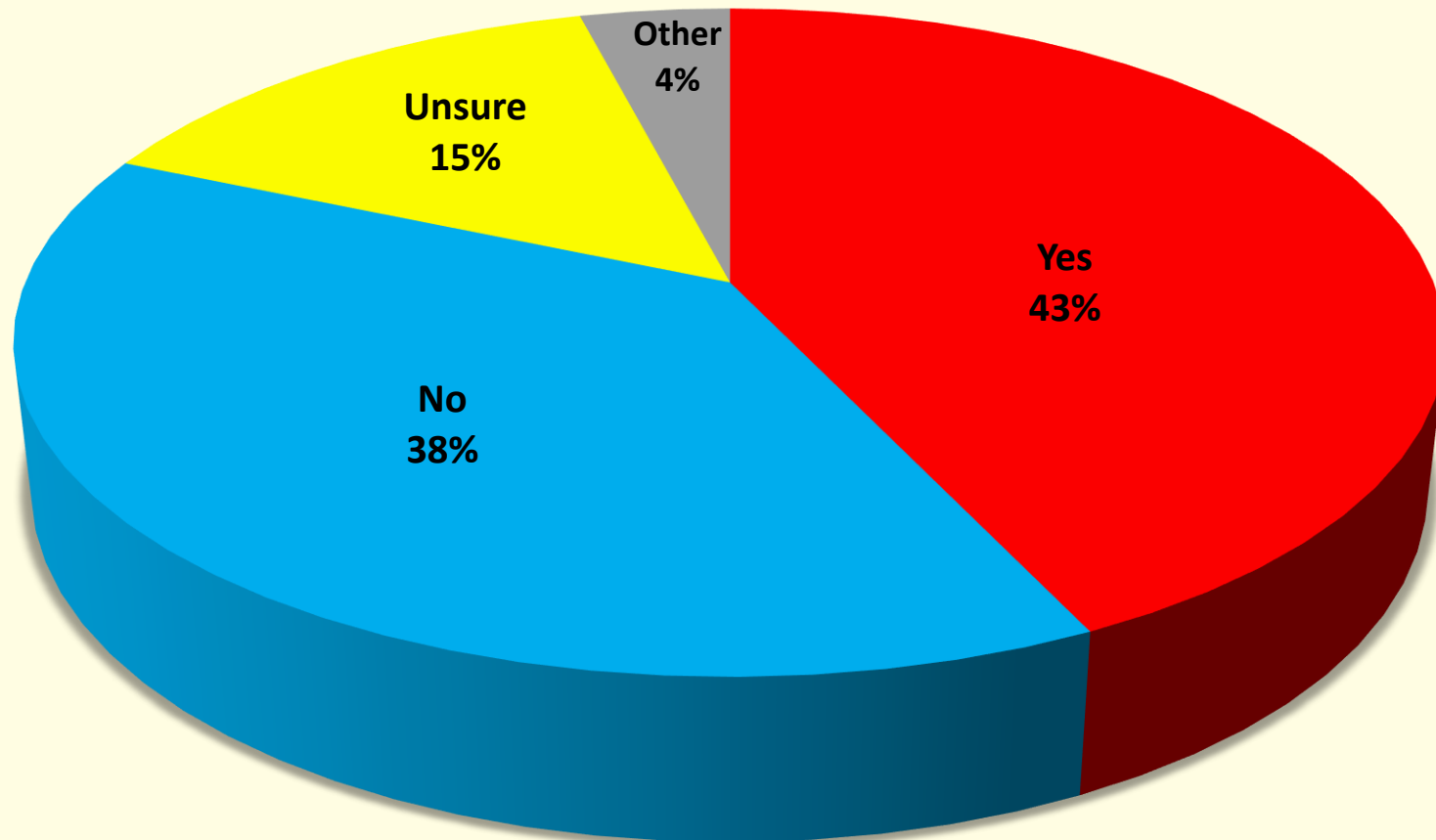
Note: Respondents may have selected more than one condition.

Results - Patient Survey (cont'd)

Types of Diagnoses Listed Under "Other, Please Specify" as Indicated by Patients, West Virginia, 2017

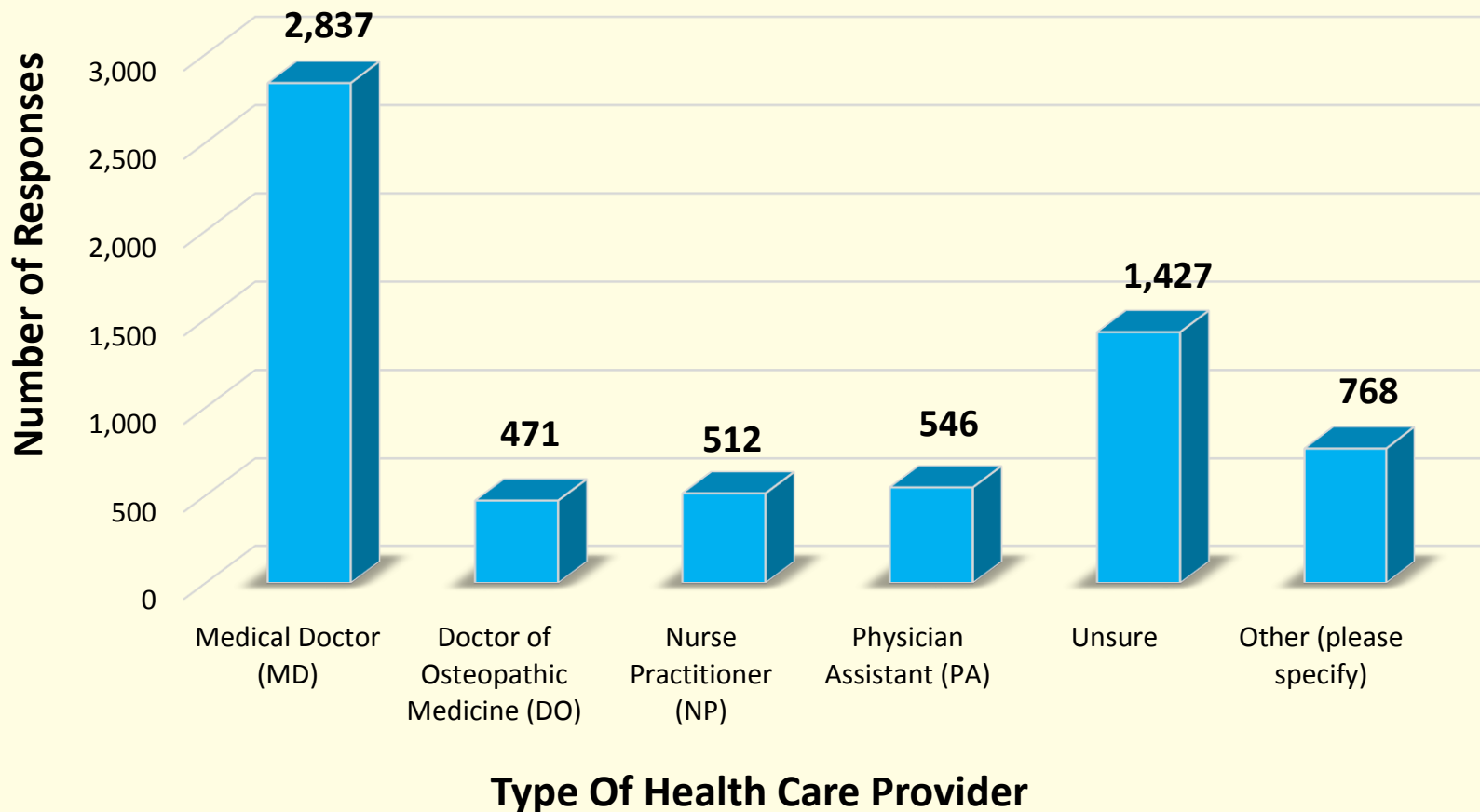


Patients Indicating Communication with Their Health Care Provider Regarding Medical Cannabis West Virginia, 2017



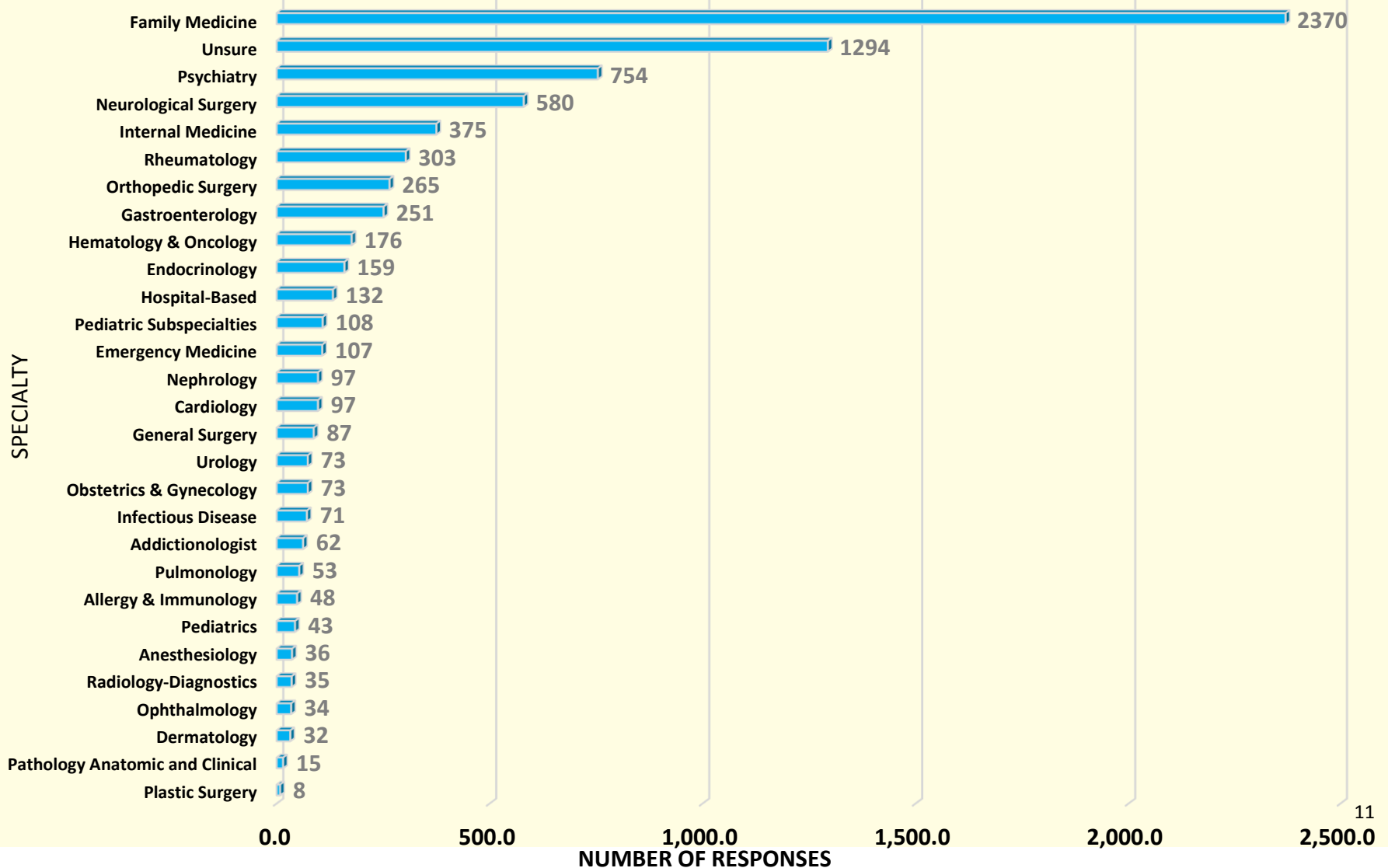
Results - Patient Survey (cont'd)

Health Care Provider With Whom Patients Discussed Use of Medical Cannabis, West Virginia, 2017

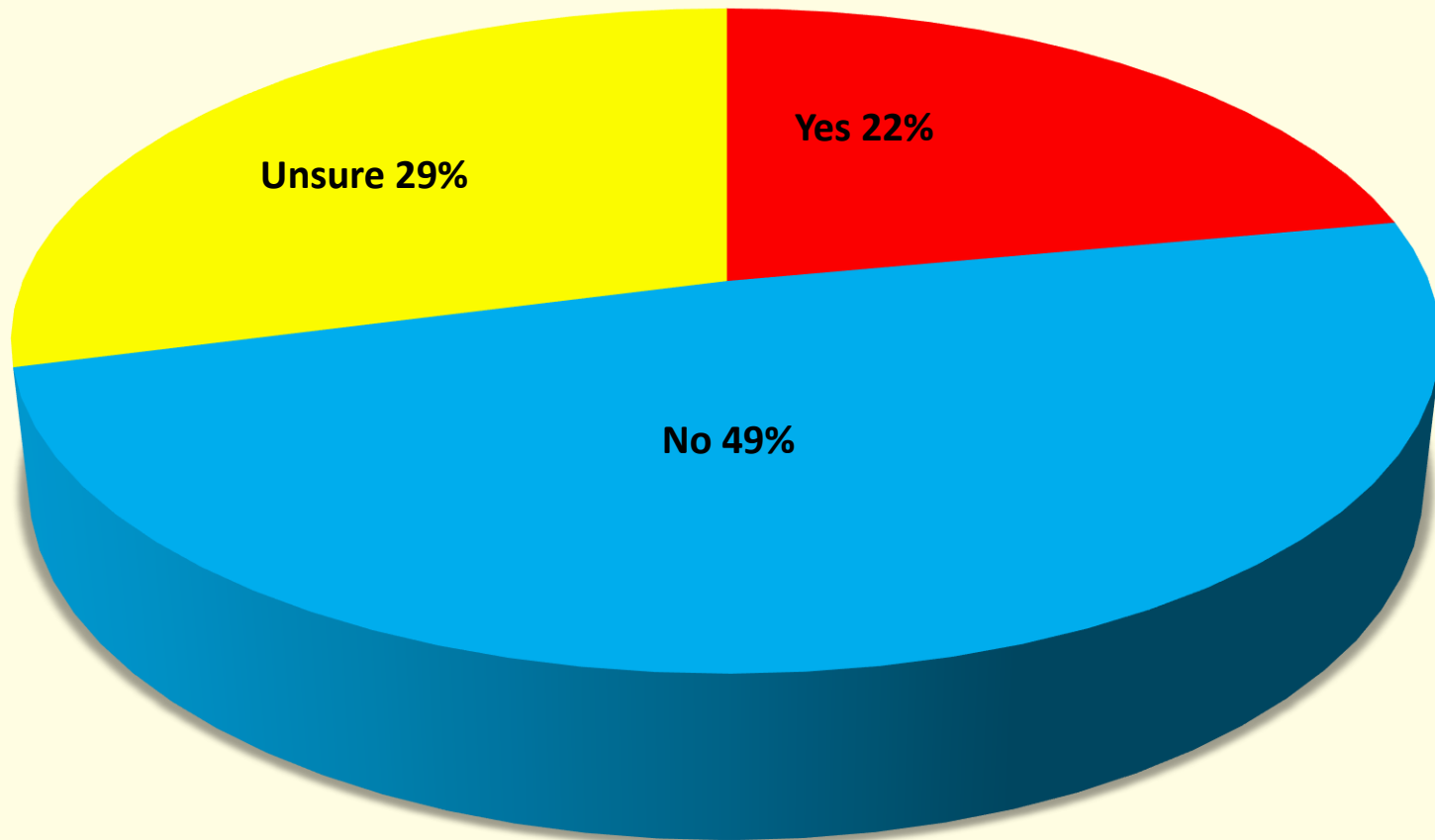


Results - Patient Survey (cont'd)

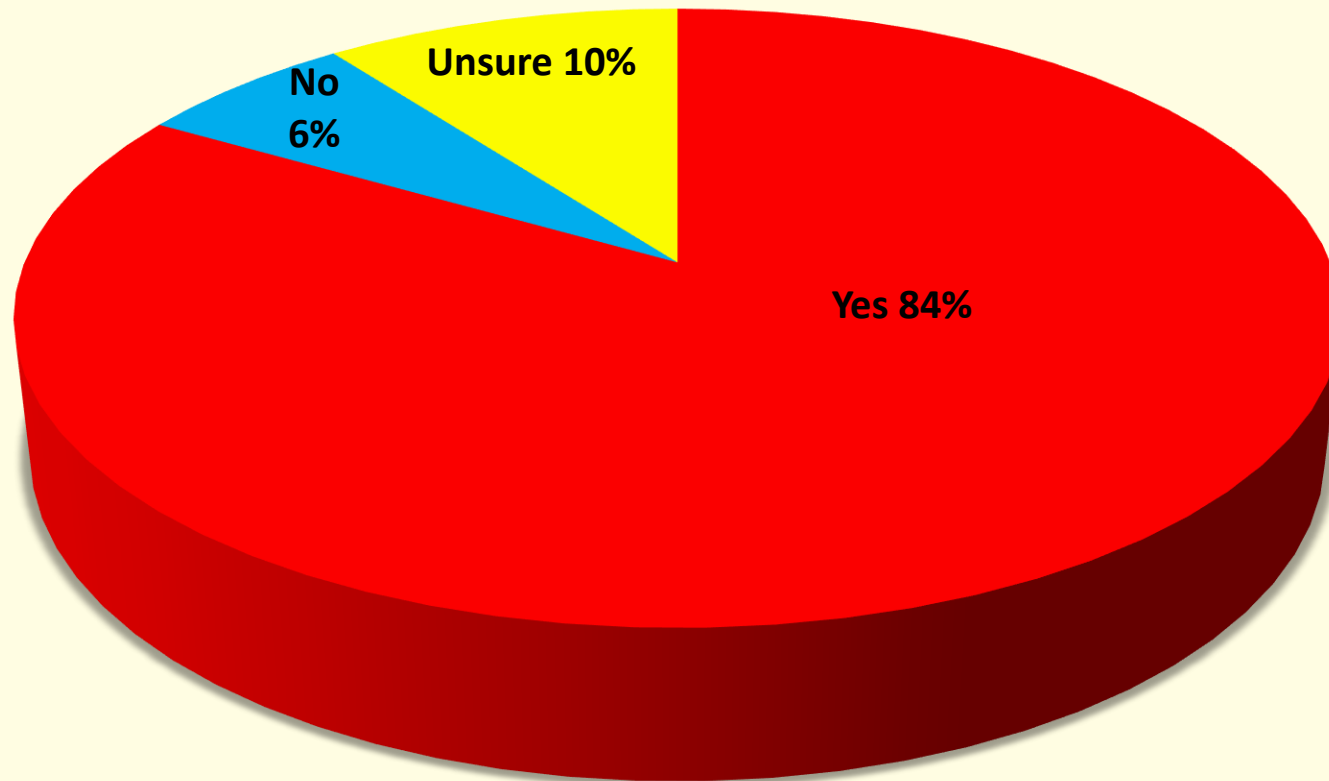
Specialty of Health Care Provider as Indicated by Patient, West Virginia Medical Cannabis Patient Interest Survey, 2017



Patients Indicating Designation of Caregiver to Obtain Medical Cannabis, West Virginia, 2017

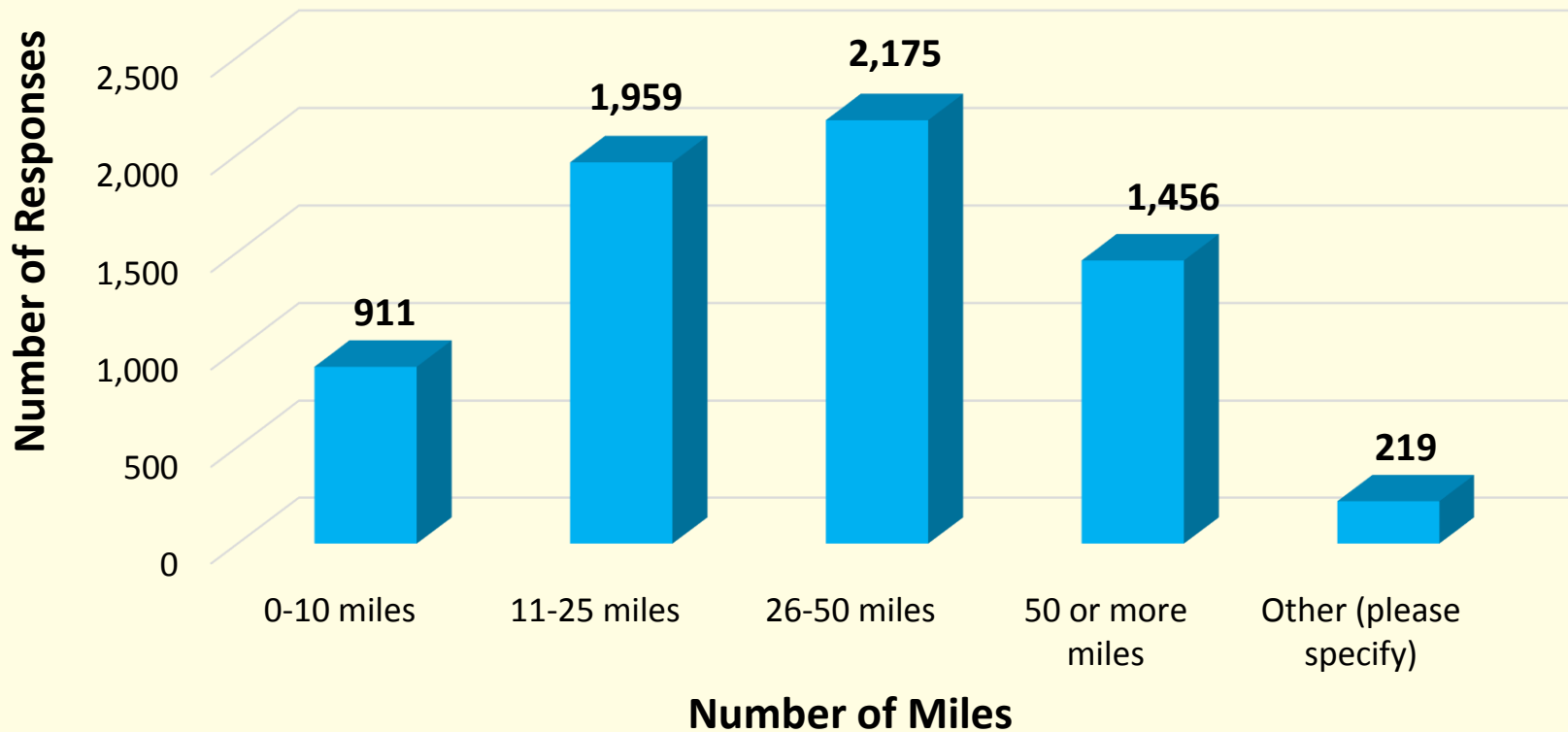


Ability and Willingness of Respondents to Drive to Purchase Medical Cannabis, West Virginia, 2017



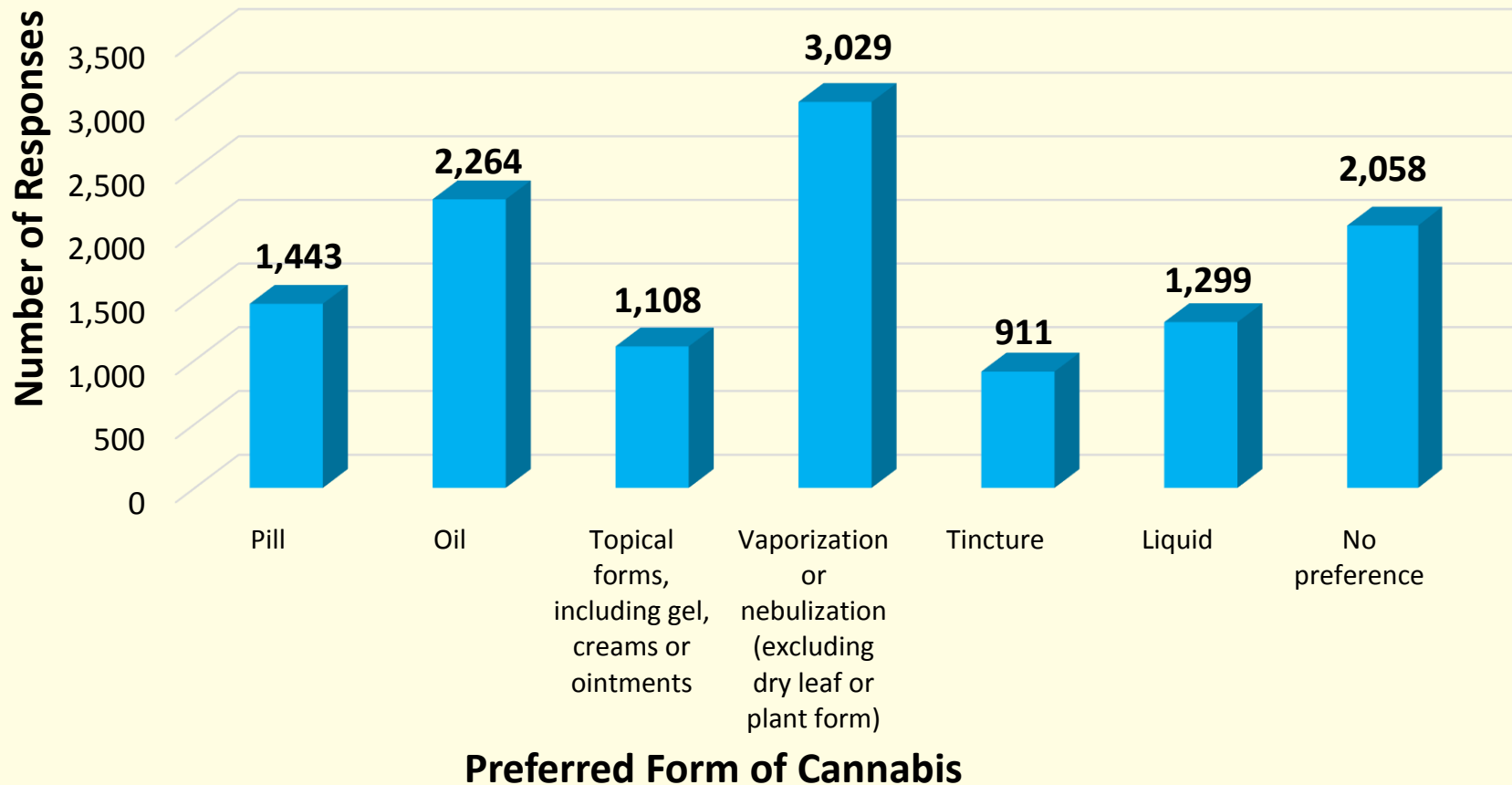
Results - Patient Survey (cont'd)

Distance Respondents Indicated Willingness to Drive to Purchase Medical Cannabis, West Virginia, 2017



Results - Patient Survey (cont'd)

Preferred Form of Medical Cannabis as Indicated by Patient Respondents, West Virginia, 2017



Data Objectives for Physician Survey

Method:

Survey available October 24, 2017 – November 14, 2017

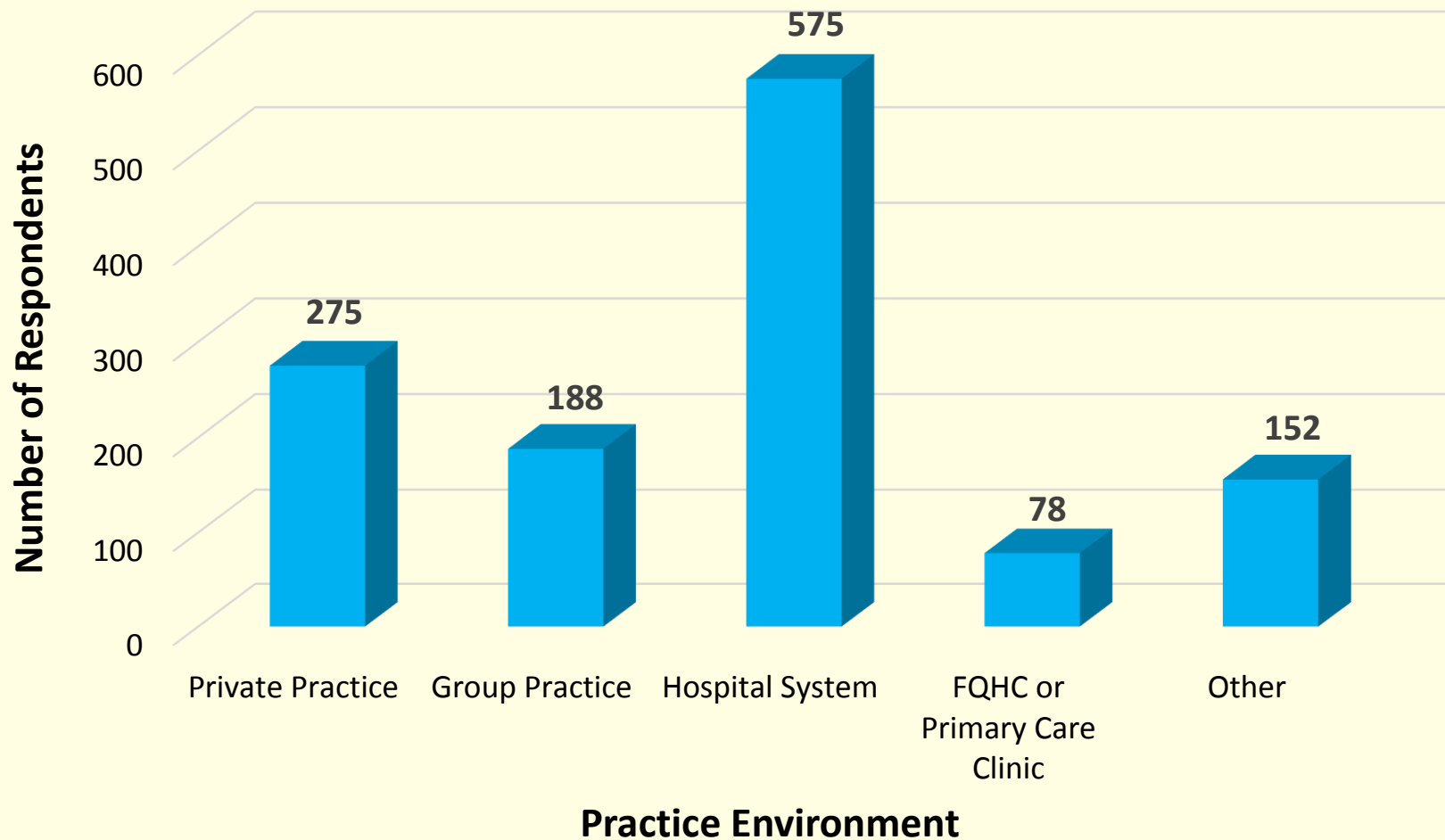
- **Medical boards sent email to licensed physicians with link to survey**

Results:

- **Total of 1,455 physicians completed online survey**
- **1,190 physicians interested; 265 not interested in medical cannabis**
- **Physicians indicated practice environments, specialties, and counties in which they practice**
- **28 specialties indicated by respondents**
- **Physicians indicated the serious medical conditions for which they provide care**
- **Physicians asked to indicate awareness of the 4-hour training course requirement for certifying physicians; most were not aware**
- **Physicians indicated interest in medical cannabis treatment**

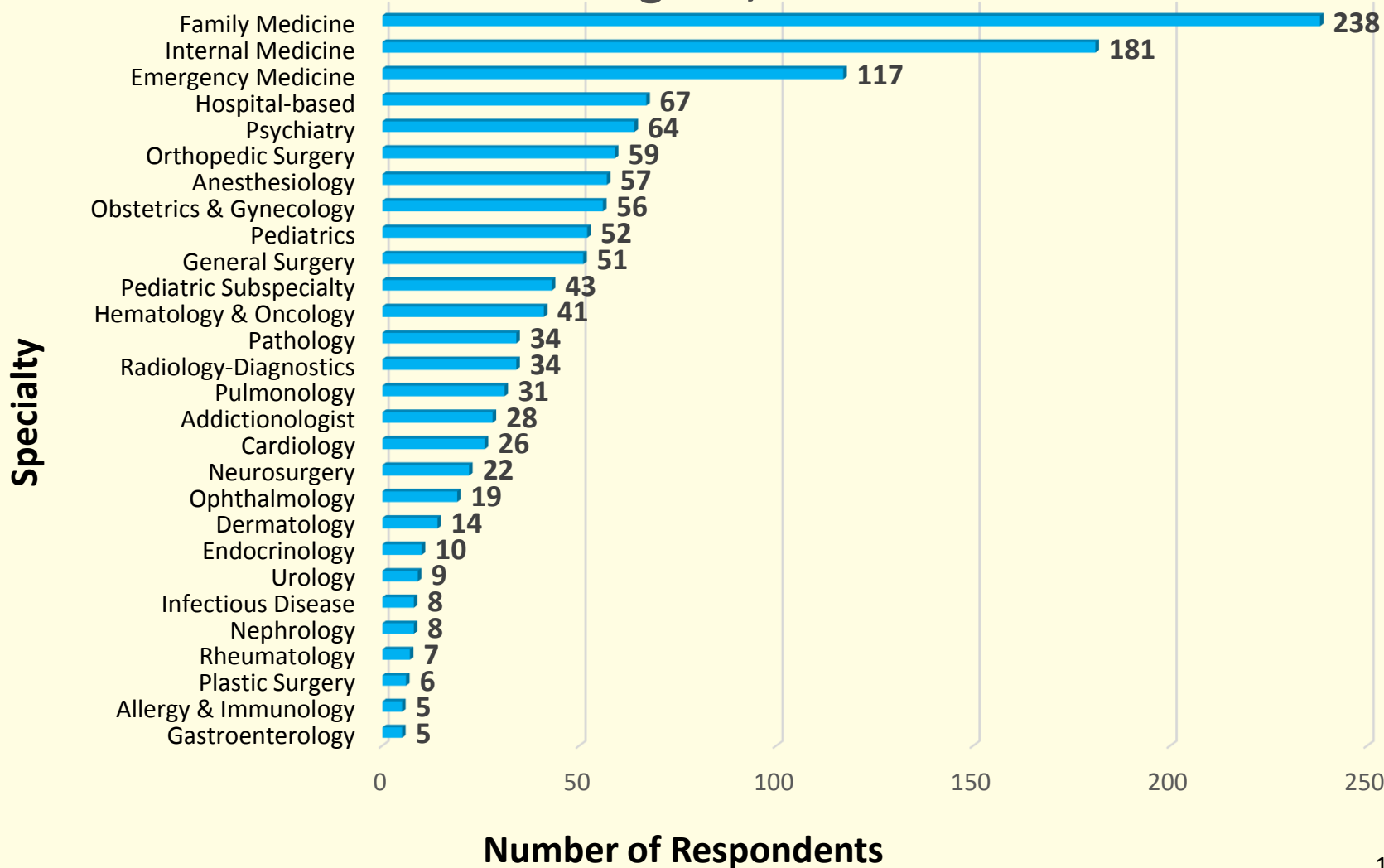
Results - Physician Survey

Practice Environment of Physicians, West Virginia, 2017



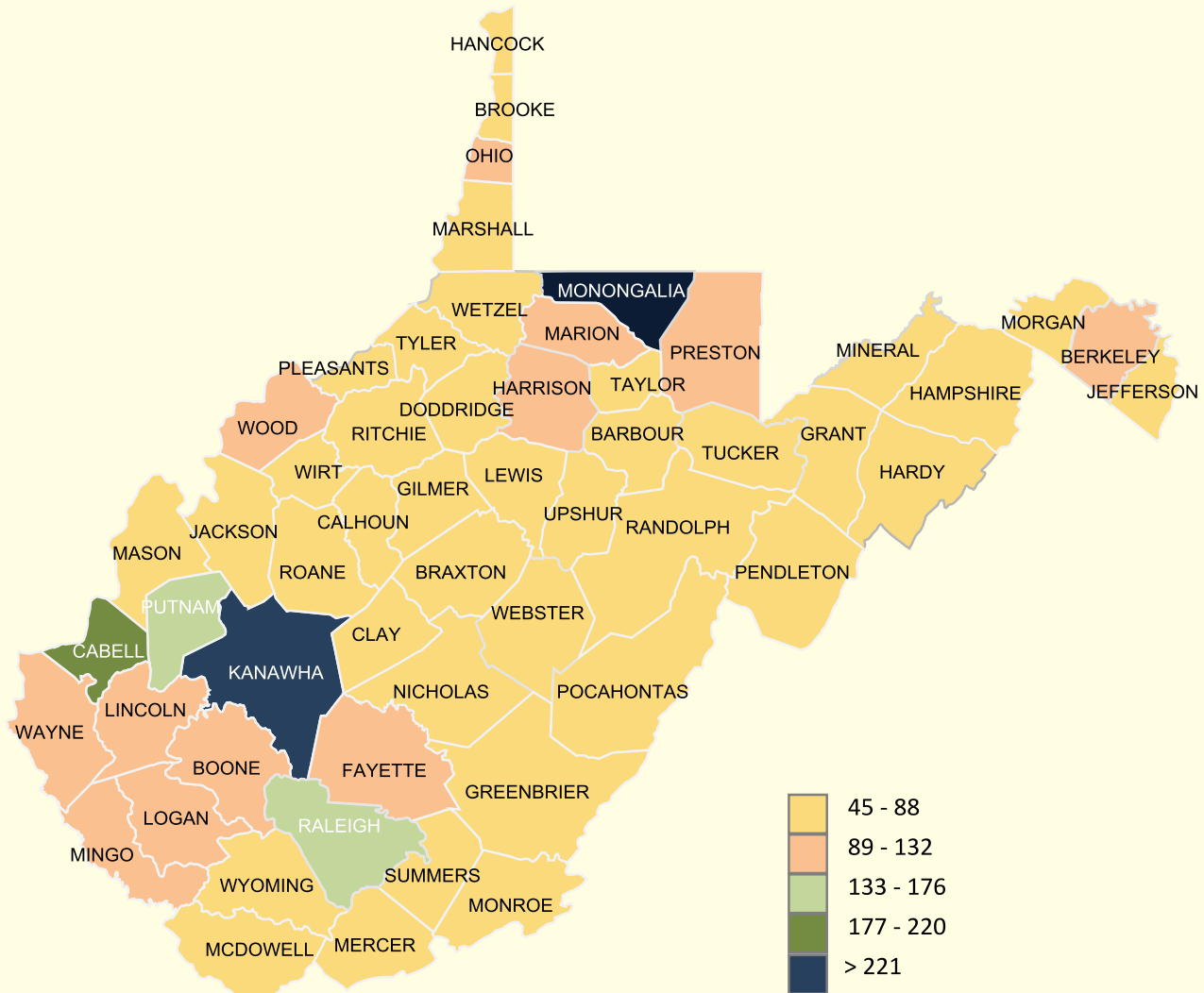
Results - Physician Survey (cont'd)

Specialties Indicated by Physicians, West Virginia, 2017



Results - Physician Survey (cont'd)

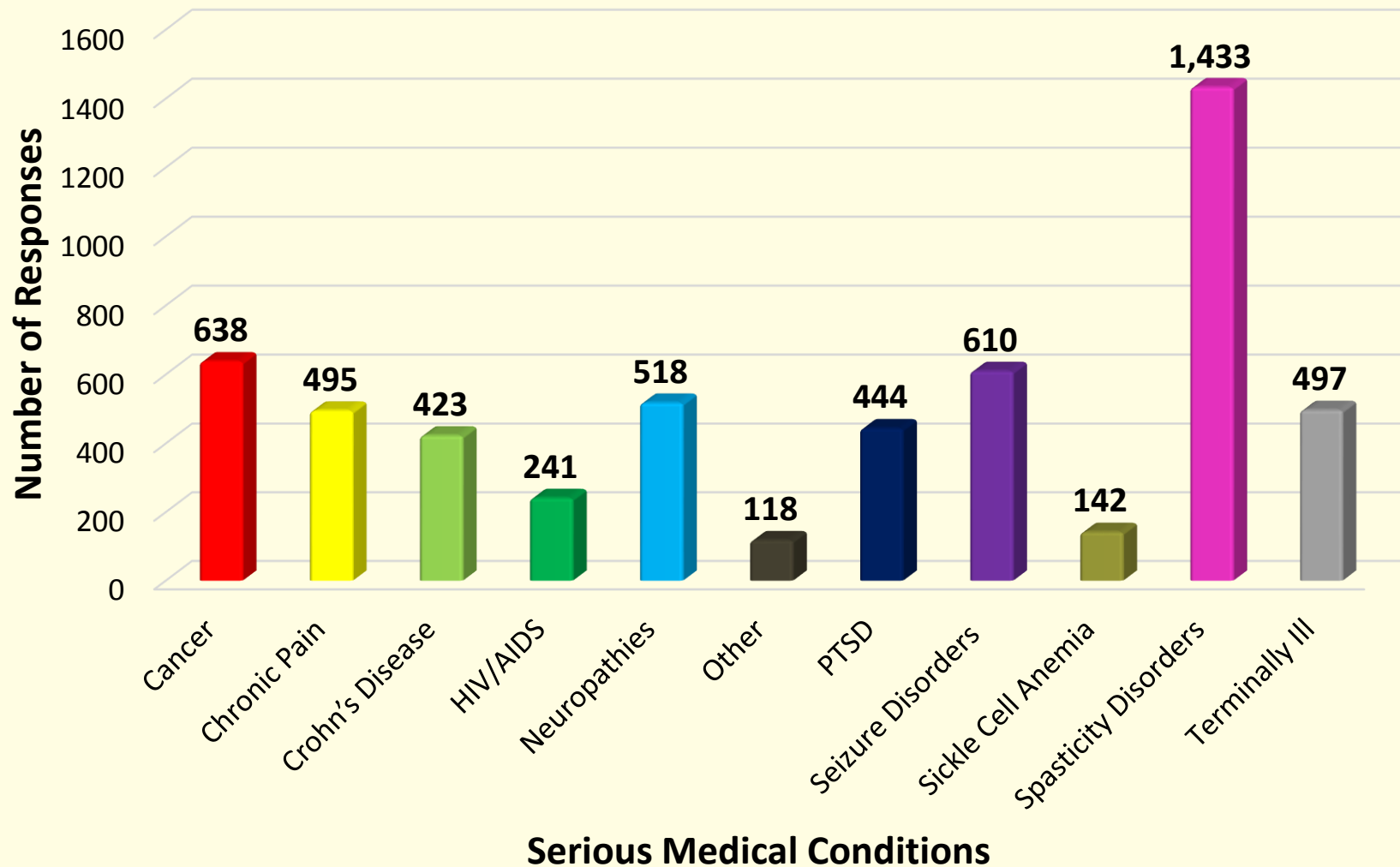
Counties Where Physicians Practice, West Virginia, 2017



- **Related disorders were combined:**
 - **Seizure Disorders**
 - **Epilepsy**
 - **Intractable Seizures**
 - **Spasticity Disorders**
 - **Amyotrophic Lateral Sclerosis (ALS)**
 - **Huntington's Disease**
 - **Parkinson's Disease**
 - **Multiple Sclerosis (MS)**

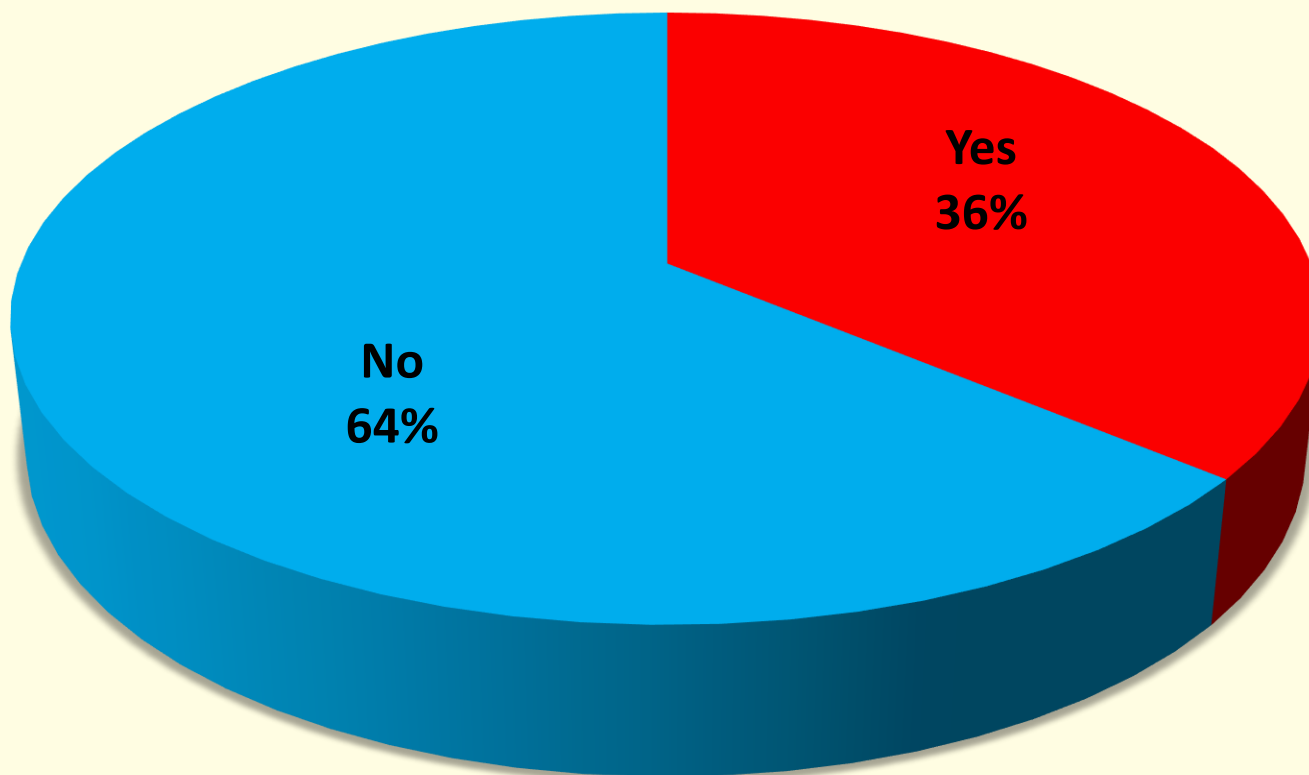
Results - Physician Survey (cont'd)

Provide Care for Serious Medical Conditions, West Virginia, 2017



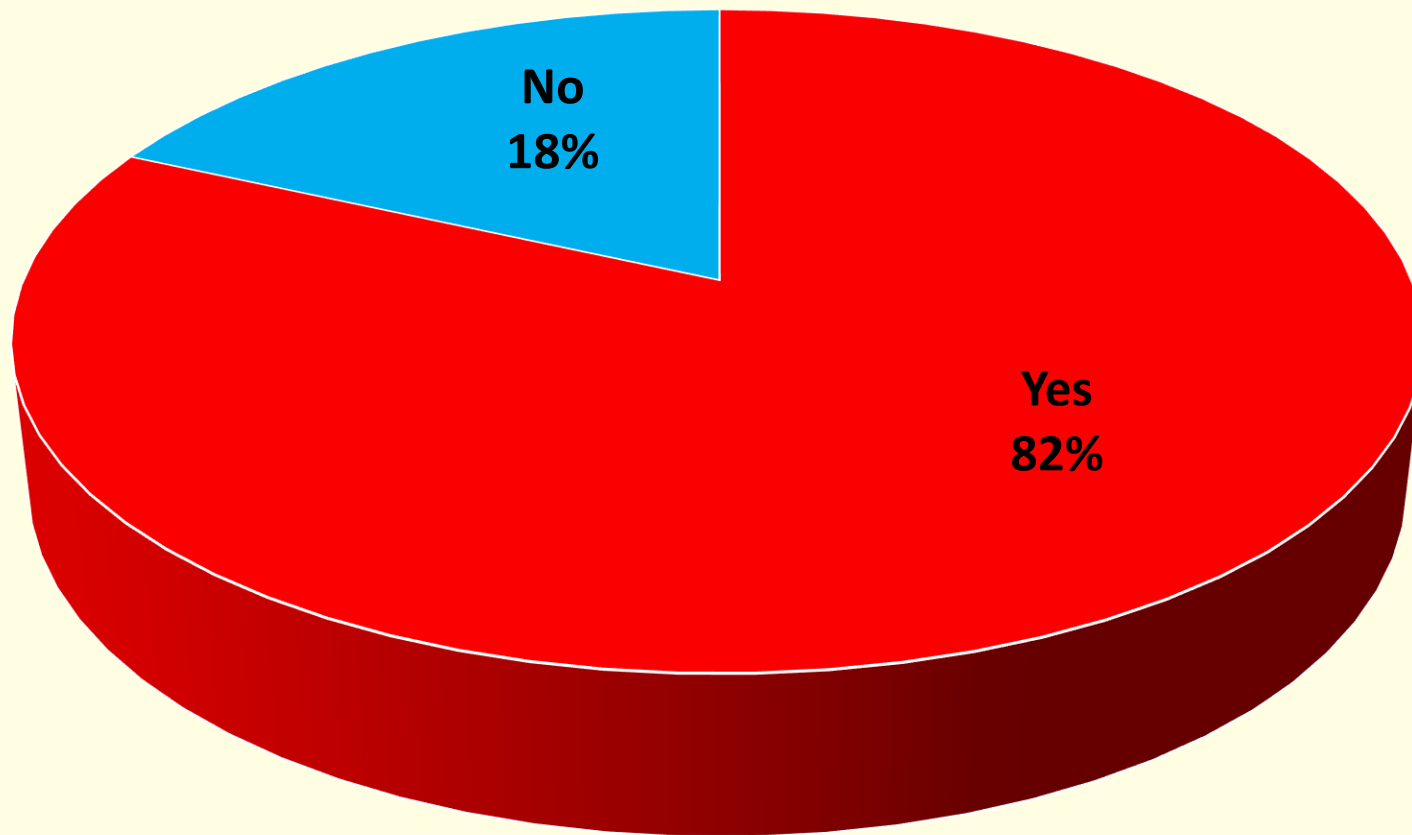
Results - Physician Survey (cont'd)

**Respondents Indicating Awareness of 4-hour Training Course Requirement,
West Virginia Physician Survey, 2017**



Results - Physician Survey (cont'd)

**Interest Shown by Respondents,
West Virginia Physician Survey, 2017**



Data Objectives for Other Data Systems

Method:

- Most recent three years of available data
- Determine location of person with serious medical conditions
- ICD 9-10 code data for serious medical conditions

Results:

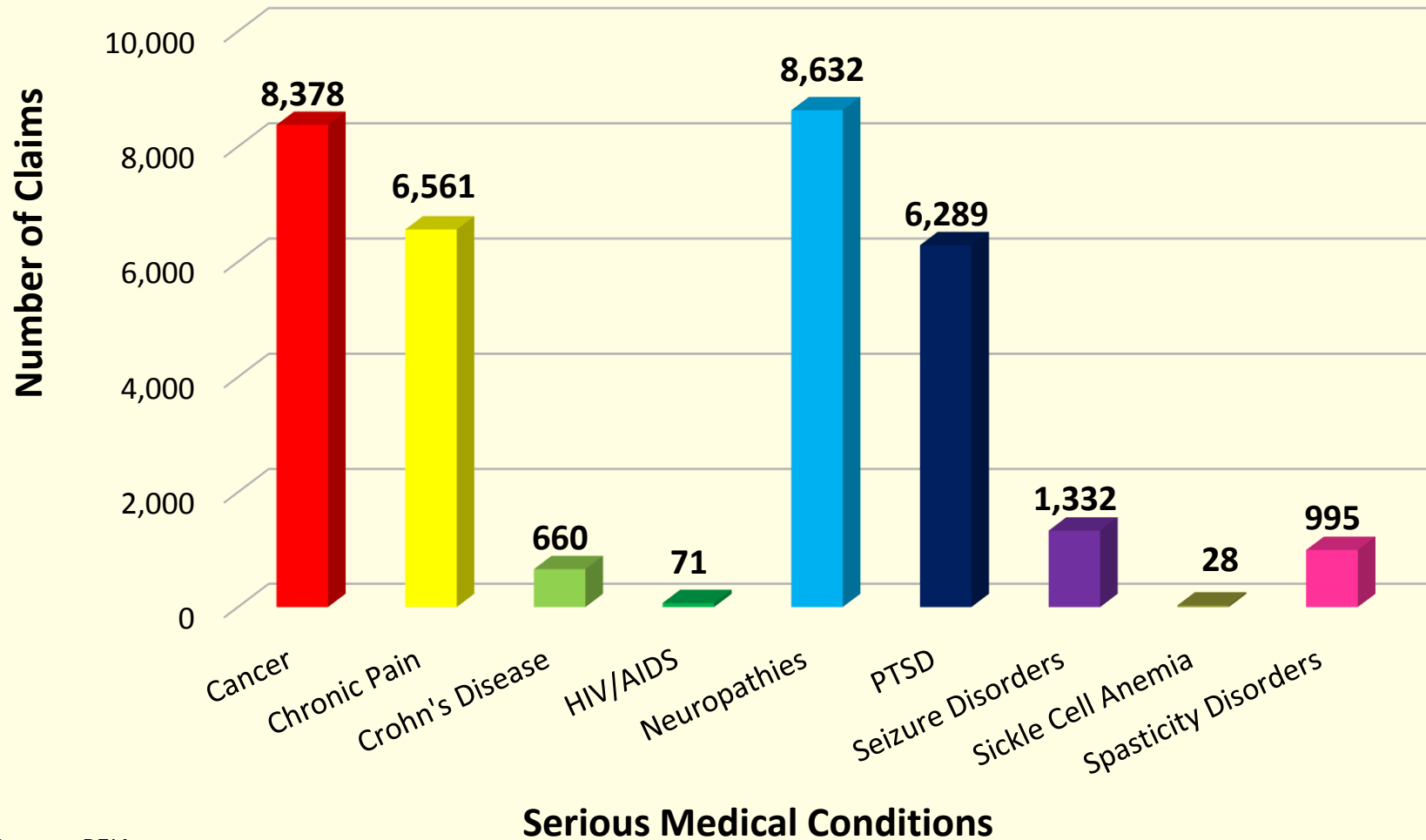
- PEIA active membership with serious medical conditions
- West Virginia HIV/AIDS Registry Patients Living with HIV/AIDS (PLWHA) by Public Health District in 2017
- West Virginia Cancer Registry (January 2012 - December 2014) incidence data by zip code
- Medicaid (January 2015 - June 2017) by zip code
- Medicare (January 2015 - June 2017) by zip code

WV Public Employees Insurance Agency (PEIA)

- Currently has 152,000 insured active members
- Data Set:
 - Fiscal Years January 2015 – June 2017
 - Count of active members with claims that include diagnosis codes for the applicable serious medical conditions
 - Patient duplicates have been removed from each condition claim count; however, patients with multiple conditions are represented within each condition total
 - The HIPAA Privacy Rule does not allow PEIA to provide diagnoses information by geographic area in a unit smaller than a state

Results - PEIA (cont'd)

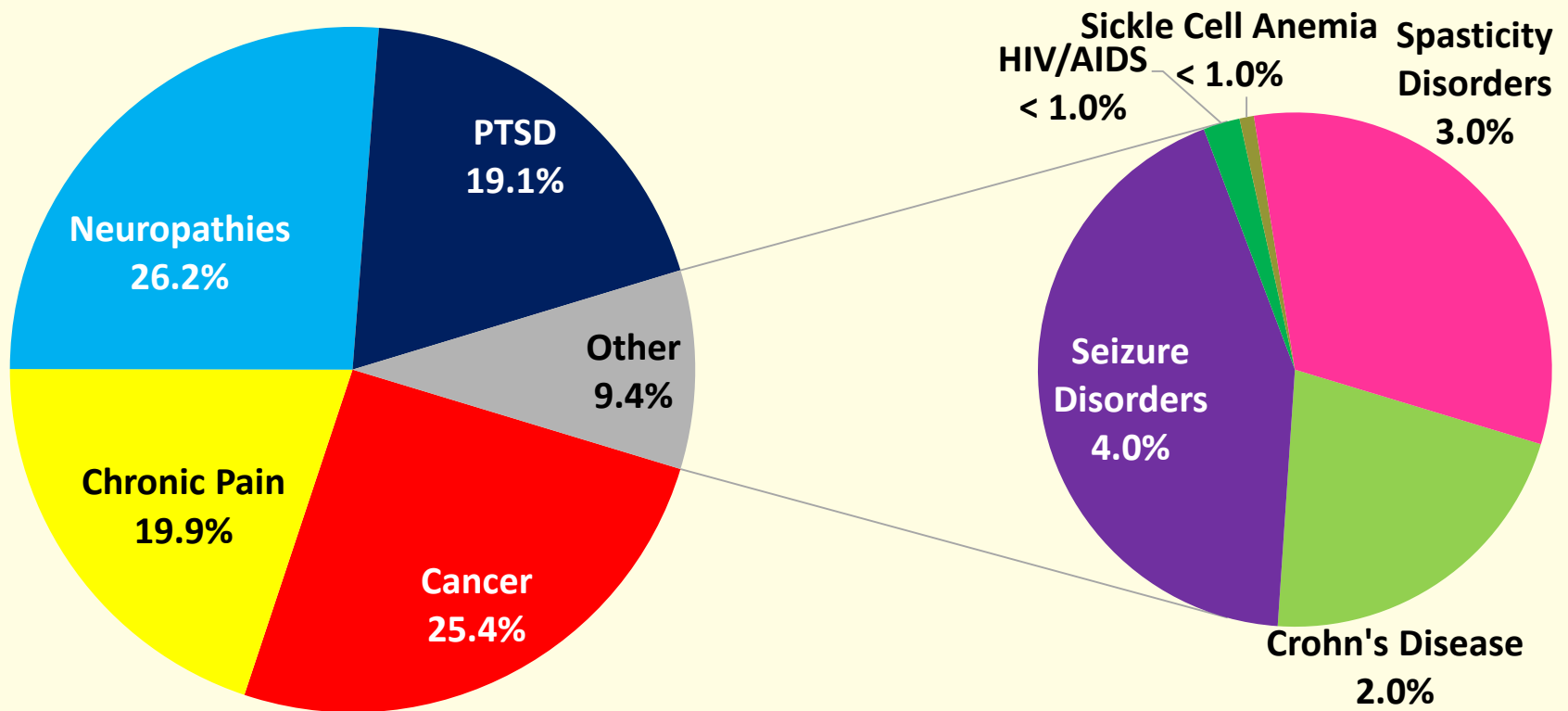
PEIA Claims by Medical Condition, West Virginia, January 2015 - June 2017



Source: PEIA

Results - PEIA (cont'd)

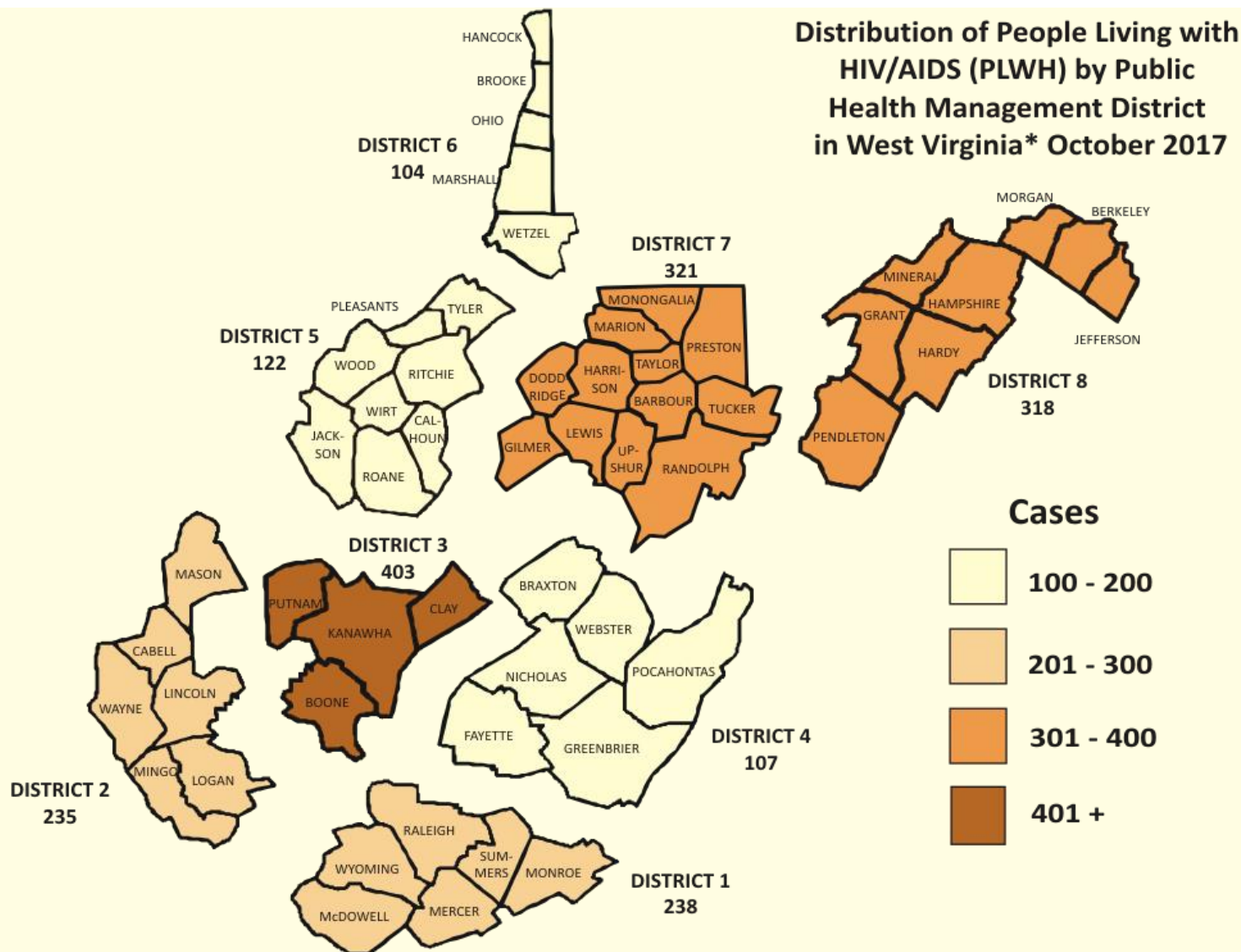
PEIA Claims by Medical Condition, West Virginia, 2015-2017



HIV/AIDS Registry Data

- **West Virginia residence at the time of diagnosis who are still living in 2017**
- **Annual review of people living with HIV/AIDS (PLWHA) with reported lab results indicating still in care**
- **Small number of cases (<5) prevented mapping data by zip code**
- **Conduct National Death match two times a year to identify if living**
- **Annual case comparison with other states - deletes duplicates**

People Living with HIV/AIDS by District in 2017



Data Source: West Virginia Department of Health and Human Resources
Bureau of Public Health, Office of Epidemiology and Prevention Services,
Division of STD and HIV, HIV/AIDS Surveillance Program

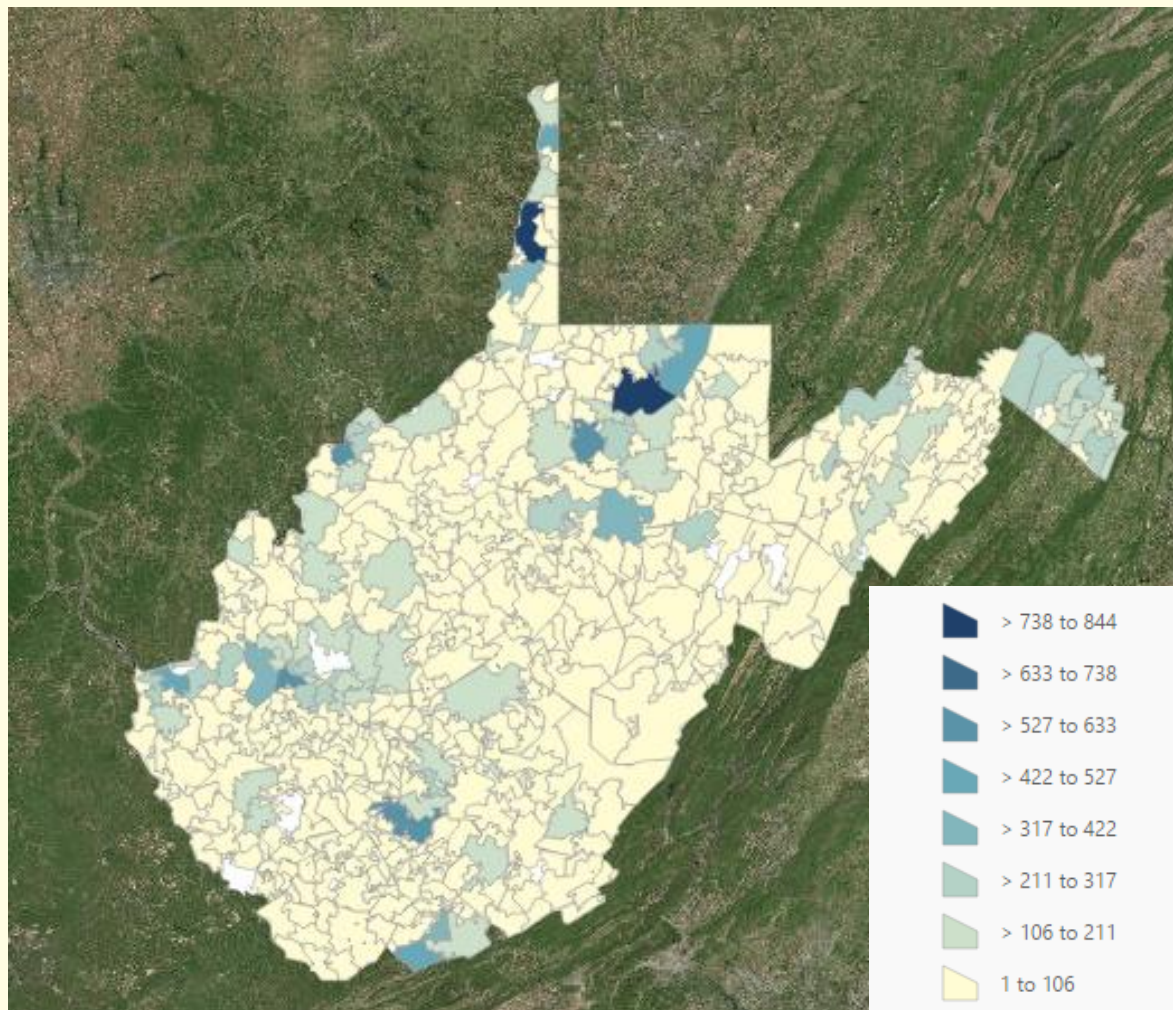
Total PLWHA in West Virginia: 1,848

*Excludes federal prisoners.

Cancer Registry Data

- **Number of invasive cancer (and in situ cancer) for the years 2012-2014 by zip code**
- **Incidence cases reported by zip code based on patient's address at the time of diagnosis**

Invasive & In Situ Cancer, January 2012 – December 2014

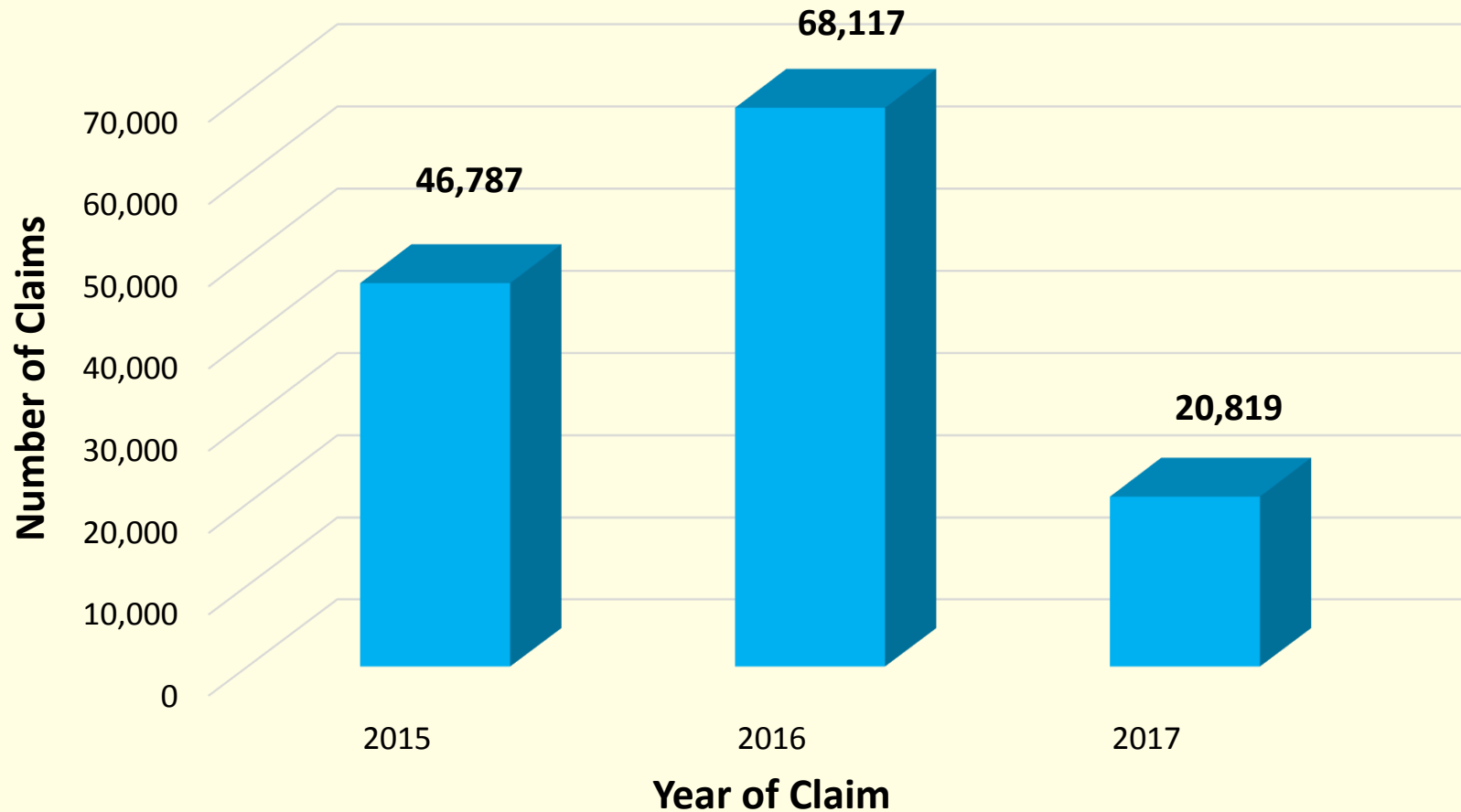


West Virginia Medicaid Serious Medical Condition Claims Data

- **Data generated from West Virginia Medicaid Data Warehouse**
- **Data Set:**
 - **Data from January 2015 - June 2017**
 - **Used ICD9/10 codes for serious medical conditions**
 - **Count of active members with claims that include diagnosis codes for the applicable serious medical conditions by zip code**

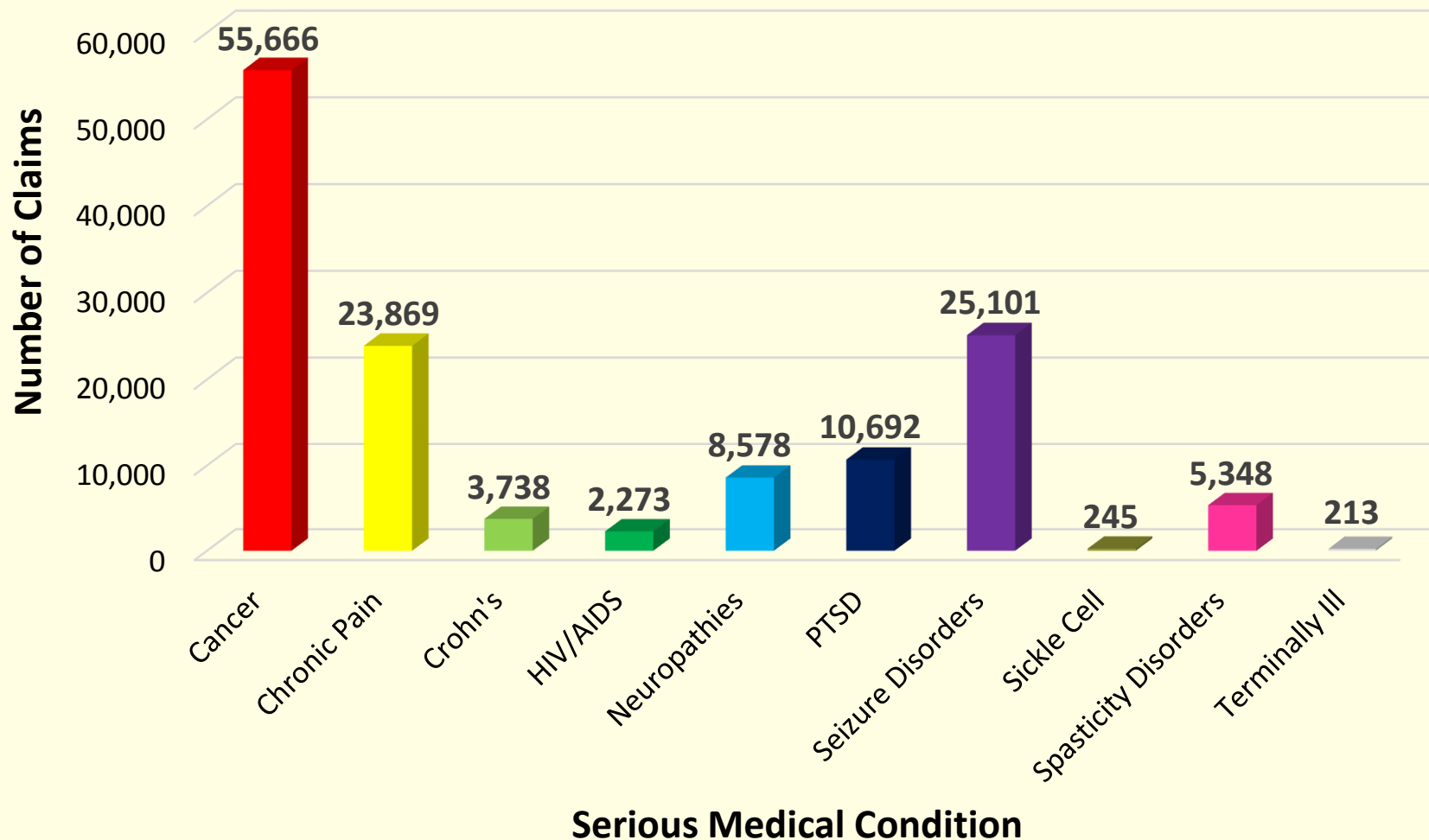
Results - Medicaid (cont'd)

Medicaid Serious Medical Condition Claims, West Virginia, January 2015 - June 2017



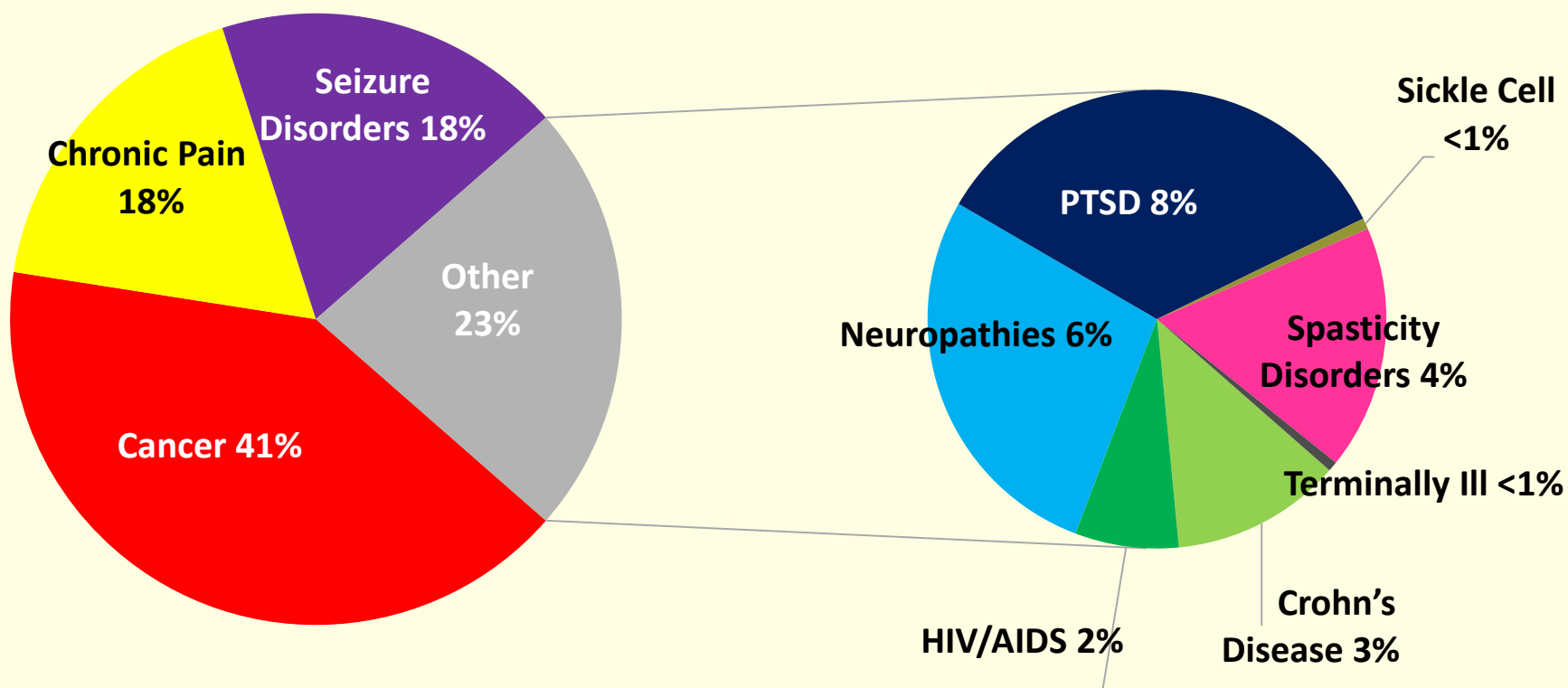
Results - Medicaid (cont'd)

Medicaid Claims by Serious Medical Condition, West Virginia, January 2015 - June 2017

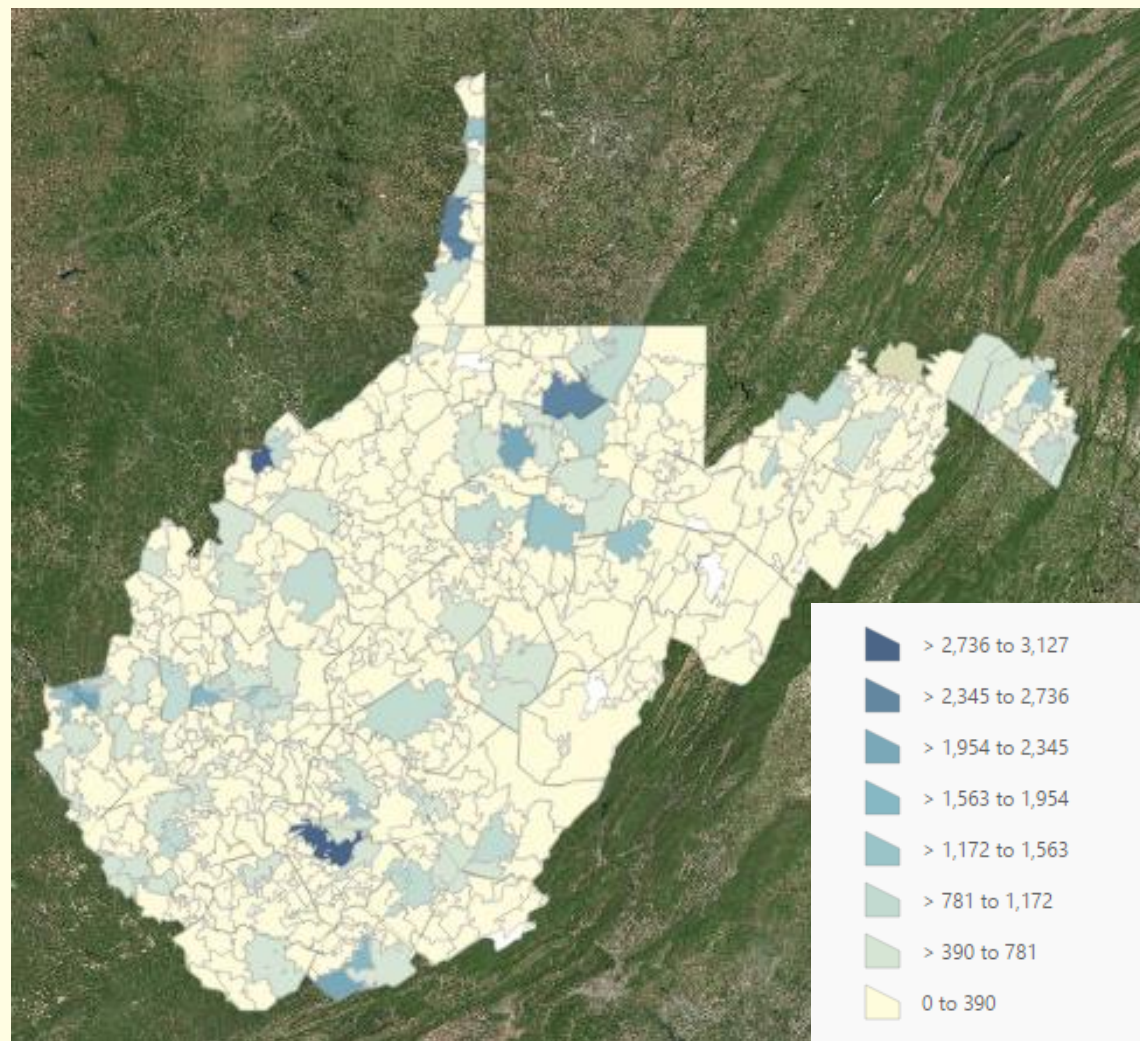


Results - Medicaid (cont'd)

Medicaid Claims by Medical Condition West Virginia, January 2015-June 2017



Medicaid Medical Condition Claims, Zip Code 2015-2017

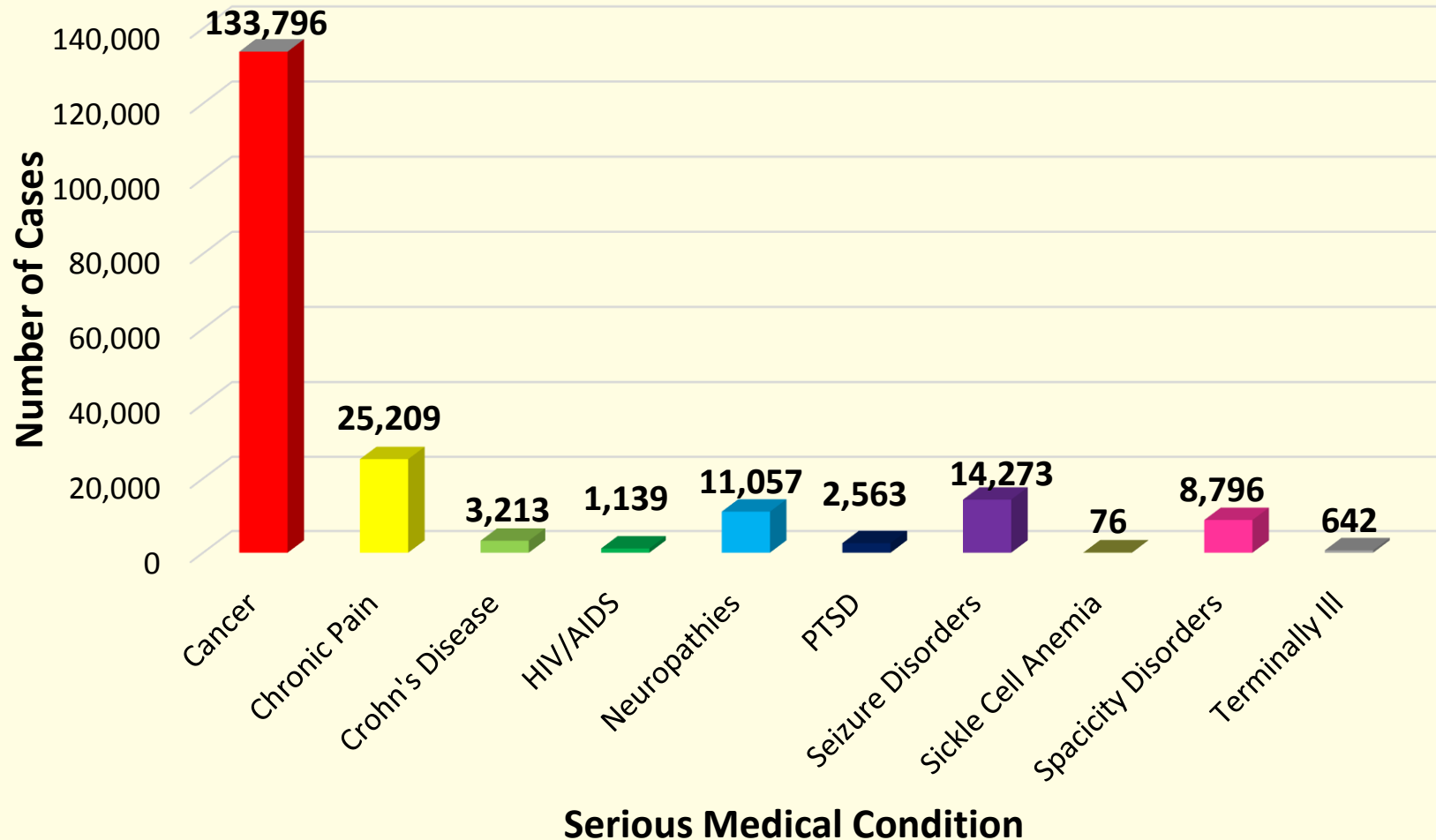


West Virginia Medicare Beneficiaries Data

- Data generated from Quality Insights
- Data Set:
 - Count of active members that include diagnosis codes for the applicable serious medical conditions
 - Patient duplicates have been removed from each condition claim count; however, patients with multiple conditions are represented within each condition total

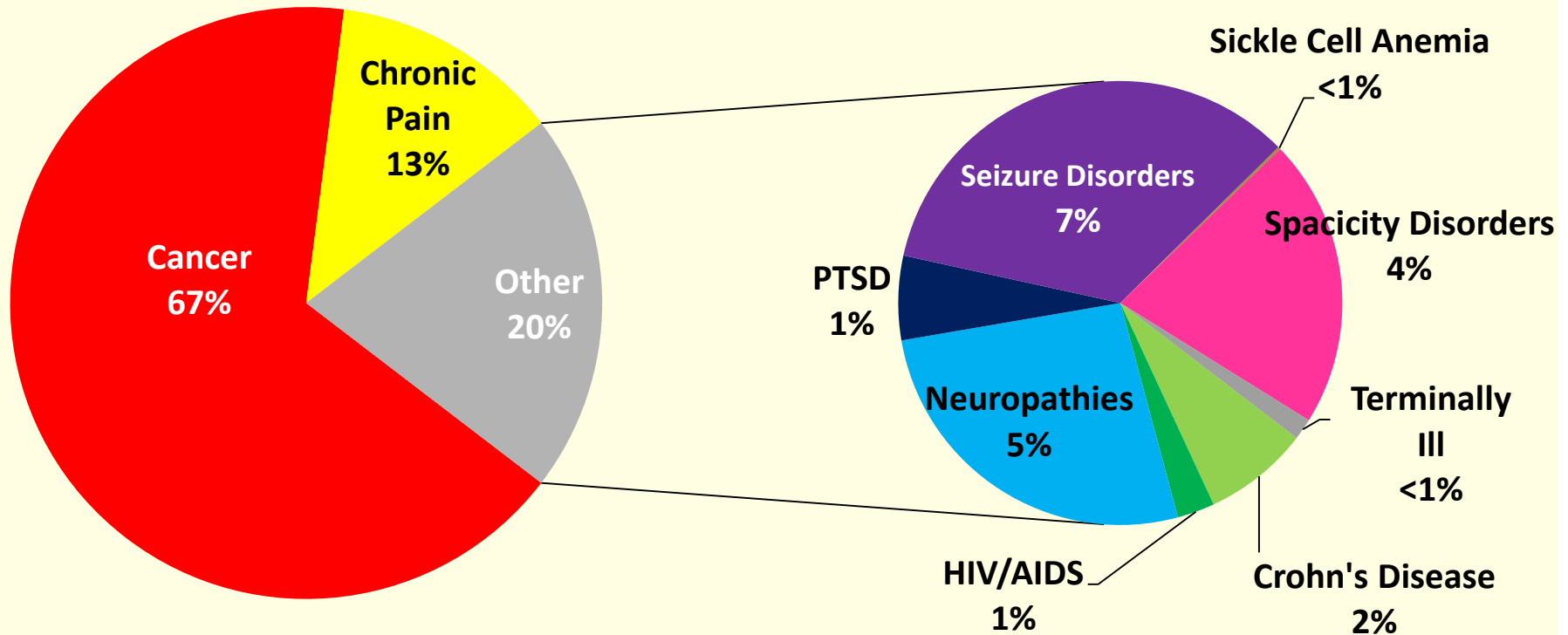
Results - Medicare (cont'd)

Medicare Cases by Disease Group, West Virginia, 2017

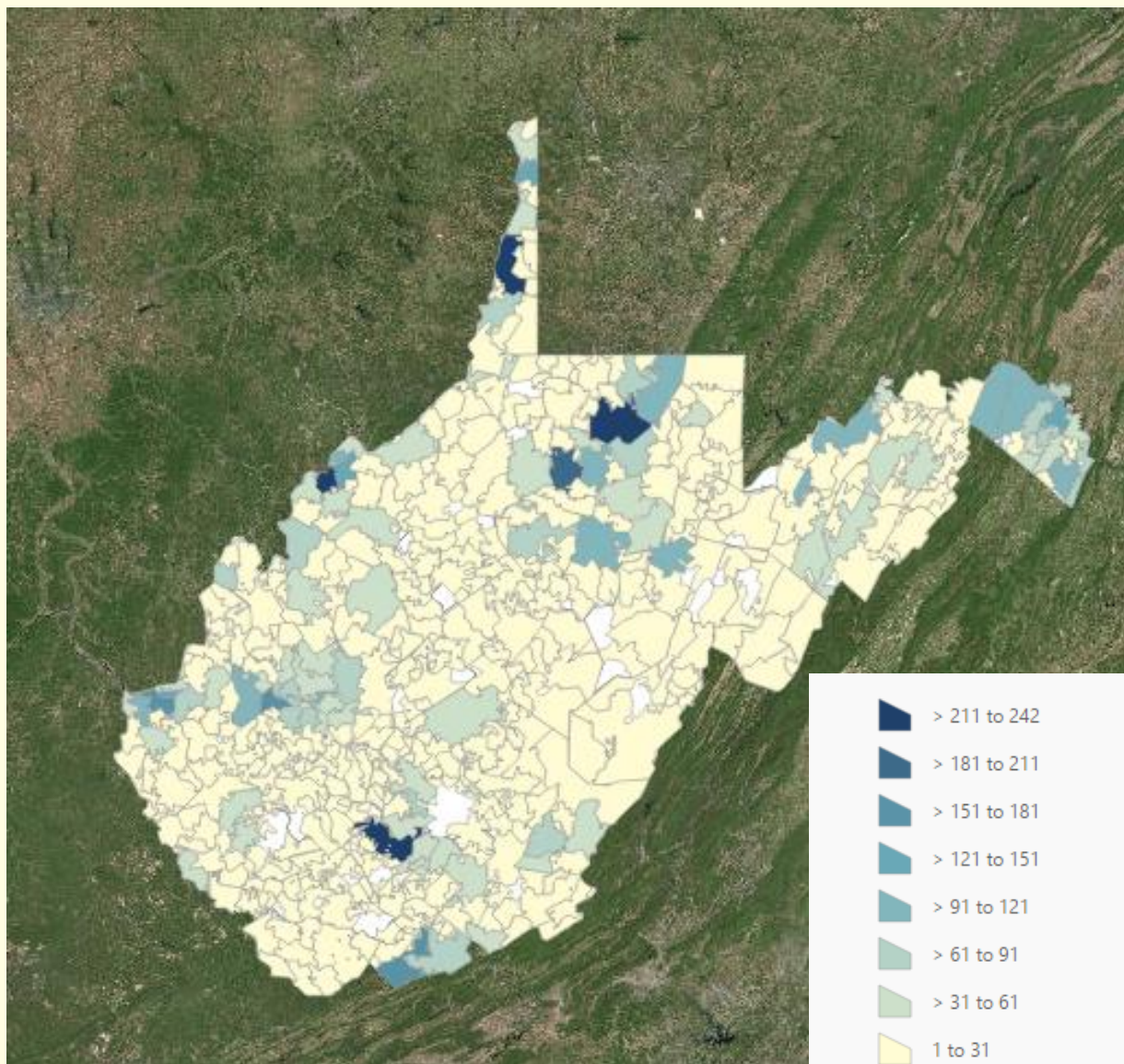


Results - Medicare (cont'd)

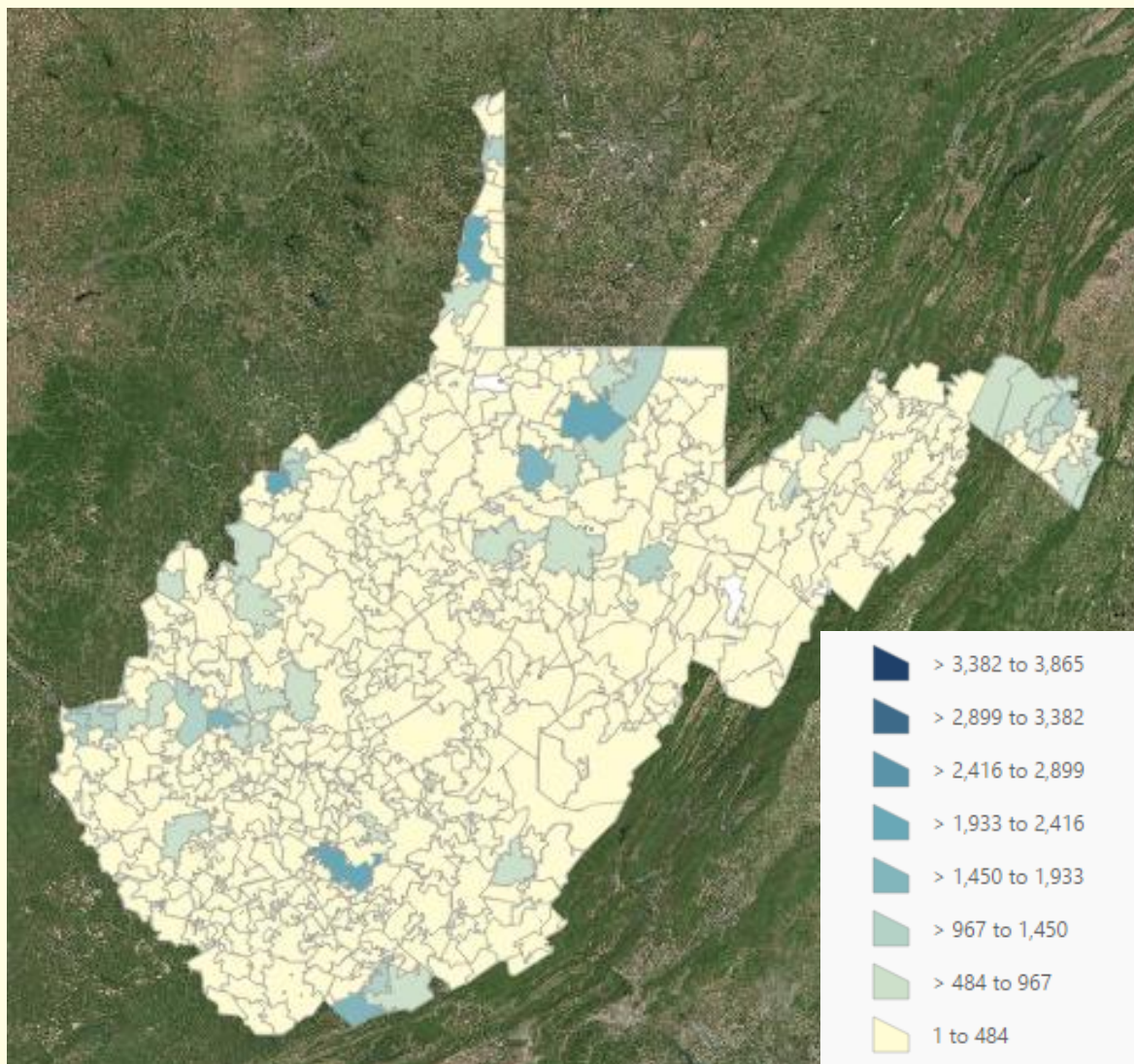
Medicare Cases by Disease Group, West Virginia, 2017



Medicare Serious Medical Conditions by Zip Code, 2015-2017



Patient Survey, Cancer, Medicaid & Medicare by Zip Code



Acknowledgements

THANK YOU

Medical Cannabis Data Team

Allysa Crews

Alex Daniels

Bijal Patel

Jessica Shlitz

Melissa Scott

Ashley Simmons

Tonya Yablonsky

Contact Information

Loretta Haddy, PhD, MS

State Epidemiologist

West Virginia Department of Health and Human Resources

Bureau for Public Health

Commissioner's Office

Phone: (304) 356-4077

Fax: (304) 558-1035

Email: Loretta.E.Haddy@wv.gov